

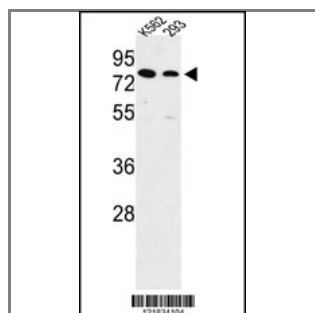
## SLC3A1 Antibody (Center)

### Peptide Affinity Purified Rabbit Polyclonal Antibody (Pab)

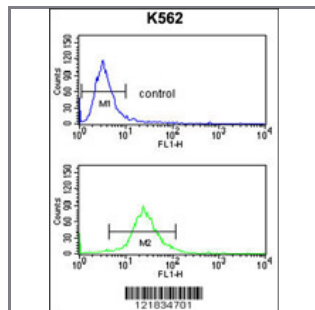
| Catalog #      | Applications: | Reactivity: | Accessions:            |
|----------------|---------------|-------------|------------------------|
| AP8802c        | WB, FC, E     | H           | <a href="#">Q07837</a> |
| Concentration: | Size:         | Isotype:    | Clone Name:            |
| 0.25 mg/ml     | 0.1 mg        | Rabbit Ig   | RB21834                |

#### Application Data:

Calculated MW: 78852 Da



Western blot analysis of SLC3A1 Antibody (Center) (Cat. #AP8802c) in K562, 293 cell line lysates (35ug/lane). SLC3A1 (arrow) was detected using the purified Pab.



SLC3A1 Antibody (Center) (Cat. #AP8802c) flow cytometry analysis of K562 cells (bottom histogram) compared to a negative control cell (top histogram). FITC-conjugated goat-anti-rabbit secondary antibodies were used for the analysis.

| Gene ID:             | Gene Symbol: |
|----------------------|--------------|
| <a href="#">6519</a> | SLC3A1       |

#### Other Names:

D2h; B(0,+)-type amino acid transport protein; Neutral and basic amino acid transport protein rBAT, NBAT; SLC3A1, RBAT

#### Target/Specificity:

This SLC3A1 antibody is generated from rabbits immunized with a KLH conjugated synthetic peptide between 163~192 amino acids from the Center region of human SLC3A1.

#### Application Notes:

The suggested dilution is:

ELISA 1:1,000  
Western blotting 1:100~500  
Flow cytometry 1:10~50

---

**Format:**

Purified polyclonal antibody supplied in PBS with 0.09% (W/V) sodium azide. This antibody is purified through a protein A column, followed by peptide affinity purification.

---

**Storage:**

Maintain refrigerated at 2-8°C for up to 6 months. For long term storage store at -20°C in small aliquots to prevent freeze-thaw cycles.

---

**Precautions:**

SLC3A1 Antibody (Center) is for research use only and not for use in diagnostic or therapeutic procedures.

---