

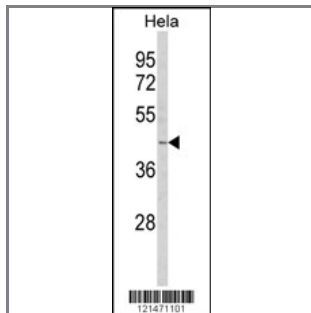
## NDE1 Antibody (N-term)

### Peptide Affinity Purified Rabbit Polyclonal Antibody (Pab)

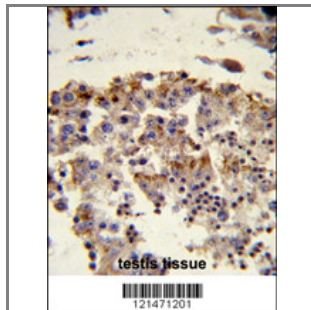
Catalog #	Applications:	Reactivity:	Accessions:
AP8800a	WB, FC, IHC, E	H	<a href="#">Q9NXR1</a>

Concentration:	Size:	Isotype:	Clone Name:
0.25 mg/ml	0.1 mg	Rabbit Ig	RB21471

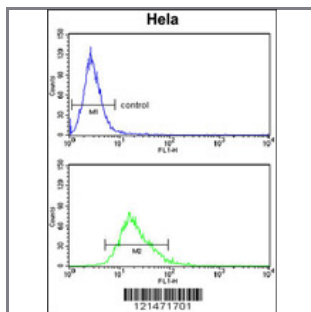
#### Application Data: Calculated MW: 38808 Da



Western blot analysis of NDE1 Antibody (N-term) (Cat. #AP8800a) in HeLa cell line lysates (35ug/lane). NDE1 (arrow) was detected using the purified Pab.



Formalin-fixed and paraffin-embedded human Testis tissue reacted with NDE1 Antibody (N-term), which was peroxidase-conjugated to the secondary antibody, followed by DAB staining. This data demonstrates the use of this antibody for immunohistochemistry; clinical relevance has not been evaluated.



NDE1 Antibody (N-term) (Cat. #AP8800a) flow cytometry analysis of HeLa cells (bottom histogram) compared to a negative control cell (top histogram). FITC-conjugated goat-anti-rabbit secondary antibodies were used for the analysis.

Gene ID:	Gene Symbol:
<a href="#">54820</a>	NDE1

#### Other Names:

Nuclear distribution protein nudE homolog 1, NudE; NDE1, NUDE

---

**Target/Specificity:**

This NDE1 antibody is generated from rabbits immunized with a KLH conjugated synthetic peptide between 10~40 amino acids from the N-terminal region of human NDE1.

---

**Application Notes:**

The suggested dilution is:

ELISA 1:1,000

Western blotting 1:100~500

Immunohistochemistry 1:50~100

Flow cytometry 1:10~50

---

**Format:**

Purified polyclonal antibody supplied in PBS with 0.09% (W/V) sodium azide. This antibody is purified through a protein A column, followed by peptide affinity purification.

---

**Storage:**

Maintain refrigerated at 2-8°C for up to 6 months. For long term storage store at -20°C in small aliquots to prevent freeze-thaw cycles.

---

**Precautions:**

NDE1 Antibody (N-term) is for research use only and not for use in diagnostic or therapeutic procedures.

---