

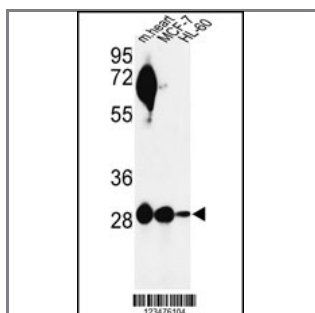
DCI Antibody (C-term)

Peptide Affinity Purified Rabbit Polyclonal Antibody (Pab)

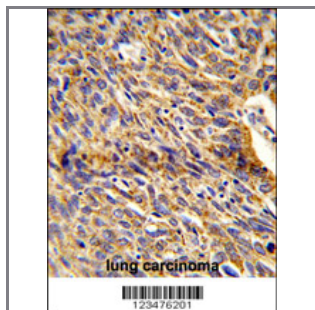
Catalog #	Applications:	Reactivity:	Accessions:
AP8770b	WB, FC, IHC, E	H, M	P42126

Concentration:	Size:	Isotype:	Clone Name:
0.25 mg/ml	0.1 mg	Rabbit Ig	RB23476

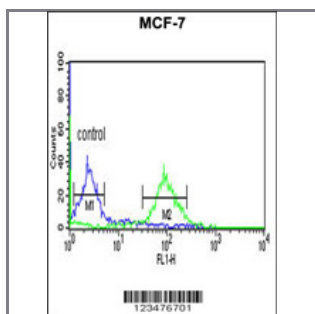
Application Data: **Calculated MW: 32816 Da**



Western blot analysis of DCI Antibody (C-term) (Cat. #AP8770b) in mouse heart tissue and MCF-7, HL-60 cell line lysates (35ug/lane). DCI (arrow) was detected using the purified Pab.



Formalin-fixed and paraffin-embedded human lung carcinoma reacted with DCI Antibody (C-term), which was peroxidase-conjugated to the secondary antibody, followed by DAB staining. This data demonstrates the use of this antibody for immunohistochemistry; clinical relevance has not been evaluated.



DCI Antibody (C-term) (Cat. #AP8770b) flow cytometric analysis of MCF-7 cells (right histogram) compared to a negative control cell (left histogram). FITC-conjugated goat-anti-rabbit secondary antibodies were used for the analysis.

Gene ID:	Gene Symbol:
1632	DCI

Other Names:

Delta(3),Delta(2)-enoyl-CoA isomerase, D3,D2-enoyl-CoA isomerase; Dodecenoyl-CoA isomerase; 3,2-trans-enoyl-CoA isomerase, mitochondrial; DCI

Target/Specificity:

This DCI antibody is generated from rabbits immunized with a KLH conjugated synthetic peptide between 273~302 amino acids from the C-term region of human DCI.

Application Notes:

The suggested dilution is:

ELISA 1:1,000

Western blotting 1:100~500

Immunohistochemistry 1:50~100

Flow cytometry 1:10~50

Format:

Purified polyclonal antibody supplied in PBS with 0.09% (W/V) sodium azide. This antibody is purified through a protein A column, followed by peptide affinity purification.

Storage:

Maintain refrigerated at 2-8°C for up to 6 months. For long term storage store at -20°C in small aliquots to prevent freeze-thaw cycles.

Precautions:

DCI Antibody (C-term) is for research use only and not for use in diagnostic or therapeutic procedures.
