

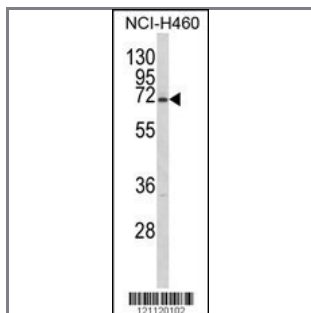
CSF1 Antibody (C-term)

Peptide Affinity Purified Rabbit Polyclonal Antibody (Pab)

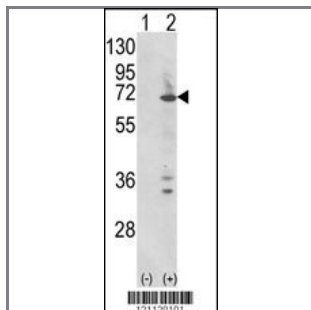
Catalog #	Applications:	Reactivity:	Accessions:
AP8731b	WB, FC, E	H	P09603

Concentration:	Size:	Isotype:	Clone Name:
0.25 mg/ml	0.1 mg	Rabbit Ig	RB21120

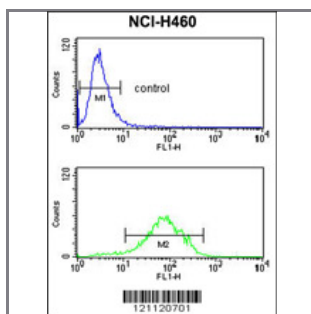
Application Data: **Calculated MW: 60119 Da**



Western blot analysis of CSF1 Antibody (C-term) (Cat. #AP8731b) in NCI-H460 cell line lysates (35ug/lane).CSF1 (arrow) was detected using the purified Pab.



Western blot analysis of CSF1 (arrow) using rabbit polyclonal CSF1 Antibody (C-term) (Cat. #AP8731b). 293 cell lysates (2 ug/lane) either nontransfected (Lane 1) or transiently transfected with the CSF1 gene (Lane 2) .



CSF1 Antibody (C-term) (Cat. #AP8731b) flow cytometry analysis of NCI-H460 cells (bottom histogram) compared to a negative control cell (top histogram).FITC-conjugated goat-anti-rabbit secondary antibodies were used for the analysis.

Gene ID:	Gene Symbol:
1435	CSF1

Other Names:

Processed macrophage colony-stimulating factor 1; Lanimostim; Macrophage colony-stimulating factor 1, CSF-1; MCSF; M-CSF; CSF1

Target/Specificity:

This CSF1 antibody is generated from rabbits immunized with a KLH conjugated synthetic peptide between 512~542 amino acids from the C-term region of human CSF1.

Application Notes:

The suggested dilution is:

ELISA 1:1,000

Western blotting 1:100~500

Flow cytometry 1:10~50

Format:

Purified polyclonal antibody supplied in PBS with 0.09% (W/V) sodium azide. This antibody is purified through a protein A column, followed by peptide affinity purification.

Storage:

Maintain refrigerated at 2-8°C for up to 6 months. For long term storage store at -20°C in small aliquots to prevent freeze-thaw cycles.

Precautions:

CSF1 Antibody (C-term) is for research use only and not for use in diagnostic or therapeutic procedures.
