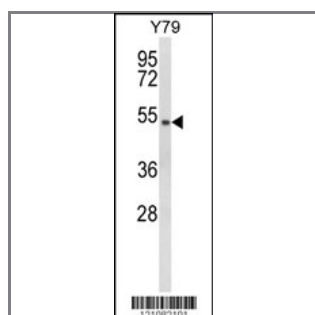


GTF2H4 Antibody (Center)

Peptide Affinity Purified Rabbit Polyclonal Antibody (Pab)

Catalog #	Applications:	Reactivity:	Accessions:
AP8730c	WB, E	H	Q92759
Concentration:	Size:	Isotype:	Clone Name:
0.25 mg/ml	0.1 mg	Rabbit Ig	RB21082

Application Data: **Calculated MW: 52186 Da**



Western blot analysis of GTF2H4 Antibody (Center) (Cat. #AP8730c) in Y79 cell line lysates (35ug/lane). GTF2H4 (arrow) was detected using the purified Pab.

Gene ID: [2968](#)
Gene Symbol: GTF2H4

Other Names:

General transcription factor IIH subunit 4; General transcription factor IIH polypeptide 4; TFIIH basal transcription factor complex p52 subunit; Basic transcription factor 2 52 kDa subunit; BTF2-p52; GTF2H4

Target/Specificity:

This GTF2H4 antibody is generated from rabbits immunized with a KLH conjugated synthetic peptide between 130~159 amino acids from the Center region of human GTF2H4.

Application Notes:

The suggested dilution is:

ELISA 1:1,000

Western blotting 1:100~500

Format:

Purified polyclonal antibody supplied in PBS with 0.09% (W/V) sodium azide. This antibody is purified through a protein A column, followed by peptide affinity purification.

Storage:

Maintain refrigerated at 2-8°C for up to 6 months. For long term storage store at -20°C in small aliquots to prevent freeze-thaw cycles.

Precautions:

GTF2H4 Antibody (Center) is for research use only and not for use in diagnostic or therapeutic procedures.
