

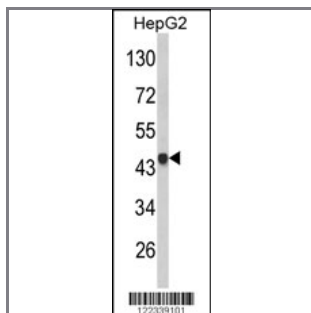
## VPS26A Antibody (Center)

### Peptide Affinity Purified Rabbit Polyclonal Antibody (Pab)

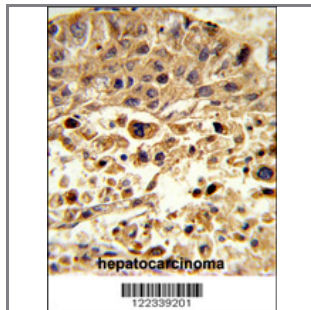
<b>Catalog #</b>	<b>Applications:</b>	<b>Reactivity:</b>	<b>Accessions:</b>
AP8722c	WB, FC, IHC, E	H	<a href="#">O75436</a>

<b>Concentration:</b>	<b>Size:</b>	<b>Isotype:</b>	<b>Clone Name:</b>
0.25 mg/ml	0.1 mg	Rabbit Ig	RB22339

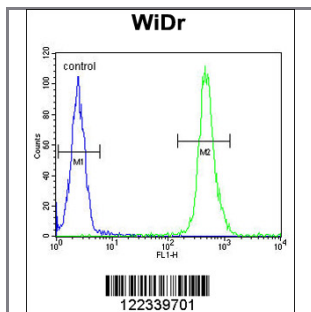
#### Application Data: Calculated MW: 38170 Da



Western blot analysis of VPS26A Antibody (Center) (Cat. #AP8722c) in HepG2 cell line lysates (35ug/lane). VPS26A (arrow) was detected using the purified Pab.



Formalin-fixed and paraffin-embedded human hepatocarcinoma reacted with VPS26A Antibody (Center), which was peroxidase-conjugated to the secondary antibody, followed by DAB staining. This data demonstrates the use of this antibody for immunohistochemistry; clinical relevance has not been evaluated.



VPS26A Antibody (Center) (Cat. #AP8722c) flow cytometric analysis of WiDr cells (right histogram) compared to a negative control cell (left histogram). FITC-conjugated goat-anti-rabbit secondary antibodies were used for the analysis.

<b>Gene ID:</b>	<b>Gene Symbol:</b>
<a href="#">9559</a>	VPS26A

**Other Names:**

Vacuolar protein sorting-associated protein 26A; Vesicle protein sorting 26A; hVPS26 ; VPS26;  
VPS26A

---

**Target/Specificity:**

This VPS26A antibody is generated from rabbits immunized with a KLH conjugated synthetic peptide between 270~299 amino acids from the Center region of human VPS26A.

---

**Application Notes:**

The suggested dilution is:

ELISA 1:1,000

Western blotting 1:100~500

Immunohistochemistry 1:50~100

Flow cytometric 1:10~50

---

**Format:**

Purified polyclonal antibody supplied in PBS with 0.09% (W/V) sodium azide. This antibody is purified through a protein A column, followed by peptide affinity purification.

---

**Storage:**

Maintain refrigerated at 2-8°C for up to 6 months. For long term storage store at -20°C in small aliquots to prevent freeze-thaw cycles.

---

**Precautions:**

VPS26A Antibody (Center) is for research use only and not for use in diagnostic or therapeutic procedures.

---