

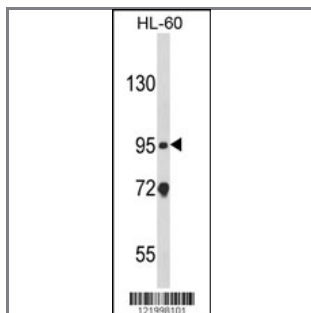
CARD4 Antibody (C-term)

Peptide Affinity Purified Rabbit Polyclonal Antibody (Pab)

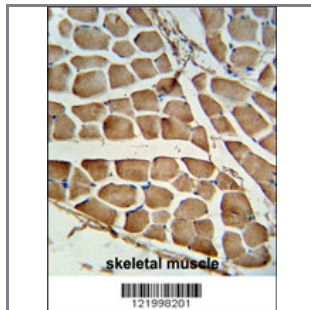
Catalog #	Applications:	Reactivity:	Accessions:
AP8720b	WB, FC, IHC, E	H	Q9Y239

Concentration:	Size:	Isotype:	Clone Name:
0.25 mg/ml	0.1 mg	Rabbit Ig	RB21998

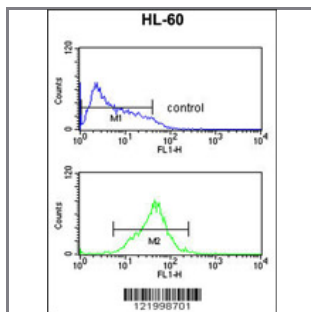
Application Data: Calculated MW: 107691 Da



Western blot analysis of CARD4 Antibody (C-term) (Cat. #AP8720b) in HL-60 cell line lysates (35ug/lane). CARD4 (arrow) was detected using the purified Pab.



Formalin-fixed and paraffin-embedded human skeletal muscle tissue reacted with CARD4 Antibody (C-term), which was peroxidase-conjugated to the secondary antibody, followed by DAB staining. This data demonstrates the use of this antibody for immunohistochemistry; clinical relevance has not been evaluated.



CARD4 Antibody (C-term) (Cat. #AP8720b) flow cytometric analysis of HL-60 cells (bottom histogram) compared to a negative control cell (top histogram). FITC-conjugated goat-anti-rabbit secondary antibodies were used for the analysis.

Gene ID:	Gene Symbol:
10392	NOD1

Other Names:

Nucleotide-binding oligomerization domain-containing protein 1; Caspase recruitment domain-containing protein 4; CARD4; NOD1

Target/Specificity:

This CARD4 antibody is generated from rabbits immunized with a KLH conjugated synthetic peptide between 924~953 amino acids from the C-terminal region of human CARD4.

Application Notes:

The suggested dilution is:

ELISA 1:1,000

Western blotting 1:100~500

Immunohistochemistry 1:50~100

Flow cytometry 1:10~50

Format:

Purified polyclonal antibody supplied in PBS with 0.09% (W/V) sodium azide. This antibody is purified through a protein A column, followed by peptide affinity purification.

Storage:

Maintain refrigerated at 2-8°C for up to 6 months. For long term storage store at -20°C in small aliquots to prevent freeze-thaw cycles.

Precautions:

CARD4 Antibody (C-term) is for research use only and not for use in diagnostic or therapeutic procedures.
