

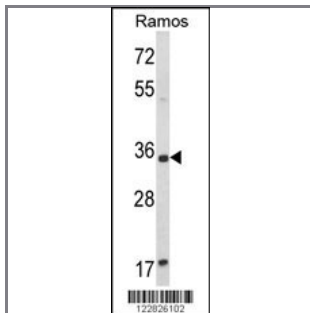
ACY3 Antibody (Center)

Peptide Affinity Purified Rabbit Polyclonal Antibody (Pab)

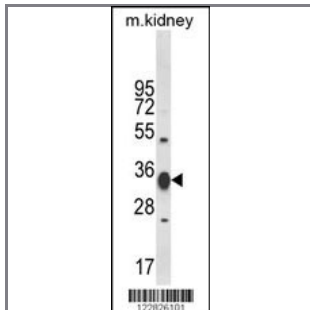
Catalog #	Applications:	Reactivity:	Accessions:
AP8715c	WB, FC, E	H, M	Q96HD9

Concentration:	Size:	Isotype:	Clone Name:
0.25 mg/ml	0.1 mg	Rabbit Ig	RB22826

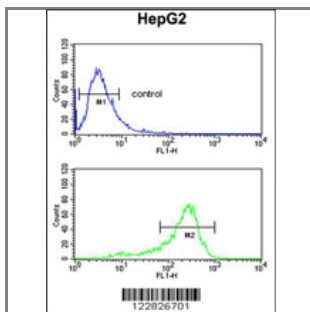
Application Data: Calculated MW: 35241 Da



Western blot analysis of ACY3 Antibody (Center) (Cat. #AP8715c) in Ramos cell line lysates (35ug/lane). ACY3 (arrow) was detected using the purified Pab.



Western blot analysis of ACY3 Antibody (Center) (Cat. #AP8715c) in mouse kidney tissue lysates (35ug/lane). ACY3 (arrow) was detected using the purified Pab.



ACY3 Antibody (Center) (Cat. #AP8715c) flow cytometric analysis of HepG2 cells (bottom histogram) compared to a negative control cell (top histogram). FITC-conjugated goat-anti-rabbit secondary antibodies were used for the analysis.

Gene ID:	Gene Symbol:
91703	ACY3

Other Names:

Aspartoacylase-2; Aminoacylase-3; ACY-3; Acylase III; Hepatitis C virus core-binding protein 1; HCBP1; ASPA2; ACY3

Target/Specificity:

This ACY3 antibody is generated from rabbits immunized with a KLH conjugated synthetic peptide between 73~103 amino acids from the Center region of human ACY3.

Application Notes:

The suggested dilution is:

ELISA 1:1,000

Western blotting 1:100~500

Immunohistochemistry 1:50~100

Flow cytometry 1:10~50

Format:

Purified polyclonal antibody supplied in PBS with 0.09% (W/V) sodium azide. This antibody is purified through a protein A column, followed by peptide affinity purification.

Storage:

Maintain refrigerated at 2-8°C for up to 6 months. For long term storage store at -20°C in small aliquots to prevent freeze-thaw cycles.

Precautions:

ACY3 Antibody (Center) is for research use only and not for use in diagnostic or therapeutic procedures.
