

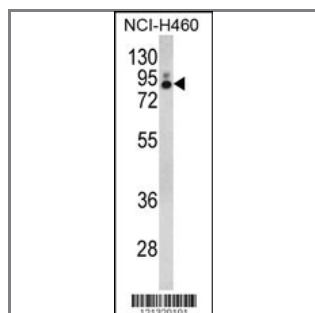
PLA2G4A Antibody (Center)

Peptide Affinity Purified Rabbit Polyclonal Antibody (Pab)

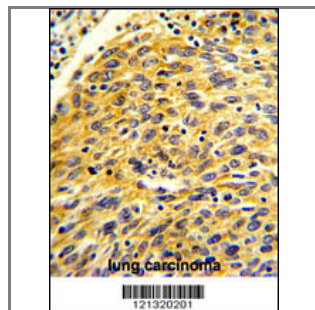
Catalog #	Applications:	Reactivity:	Accessions:
AP8510c	WB, IF, IHC, FC, E	H	P47712

Concentration:	Size:	Isotype:	Clone Name:
0.25 mg/ml	0.1 mg	Rabbit Ig	RB21320

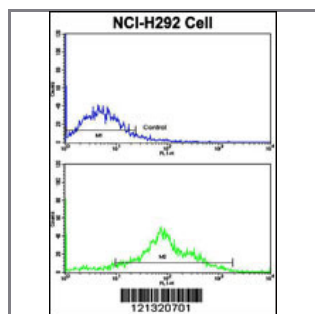
Application Data: Calculated MW: 85211 Da



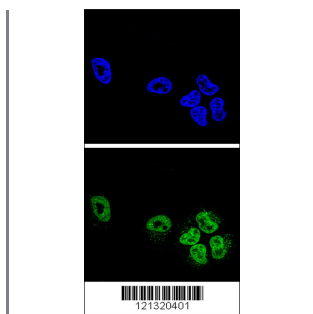
Western blot analysis of PLA2G4A Antibody (Center) (Cat. #AP8510c) in NCI-H460 cell line lysates (35ug/lane). PLA2G4A (arrow) was detected using the purified Pab.



Formalin-fixed and paraffin-embedded human lung carcinoma with PLA2G4A Antibody (Center), which was peroxidase-conjugated to the secondary antibody, followed by DAB staining. This data demonstrates the use of this antibody for immunohistochemistry; clinical relevance has not been evaluated.



Flow cytometric analysis of NCI-H292 cells using PLA2G4A Antibody (Center)(bottom histogram) compared to a negative control cell (top histogram). FITC-conjugated goat-anti-rabbit secondary antibodies were used for the analysis.



Confocal immunofluorescent analysis of PLA2G4A Antibody (Center)(Cat. #AP8510c) with NCI-H460 cell followed by Alexa Fluor® 488-conjugated goat anti-rabbit IgG (green). DAPI was used to stain the cell nuclear (blue).

Gene ID:

5321

Gene Symbol:

PLA2G4A

Other Names:

Cytosolic phospholipase A2; cPLA2; Phospholipase A2 group IVA; Phospholipase A2; Phosphatidylcholine 2-acylhydrolase; Lysophospholipase; PLA2G4; CPLA2; PLA2G4A

Target/Specificity:

This PLA2G4A antibody is generated from rabbits immunized with a KLH conjugated synthetic peptide between 520~549 amino acids from the Center region of human PLA2G4A.

Application Notes:

The suggested dilution is:

ELISA 1:1,000

Western blotting 1:100~500

Immunohistochemistry 1:50~100

Flow cytometric 1:10~50

Immunofluorescence 1:10~50

Format:

Purified polyclonal antibody supplied in PBS with 0.09% (W/V) sodium azide. This antibody is purified through a protein A column, followed by peptide affinity purification.

Storage:

Maintain refrigerated at 2-8°C for up to 6 months. For long term storage store at -20°C in small aliquots to prevent freeze-thaw cycles.

Precautions:

PLA2G4A Antibody (Center) is for research use only and not for use in diagnostic or therapeutic procedures.
