

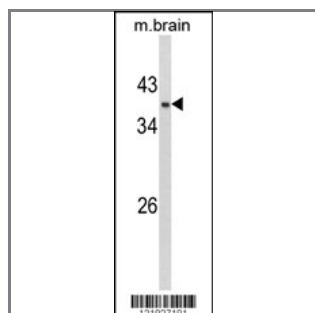
GPD1 Antibody (N-term)

Peptide Affinity Purified Rabbit Polyclonal Antibody (Pab)

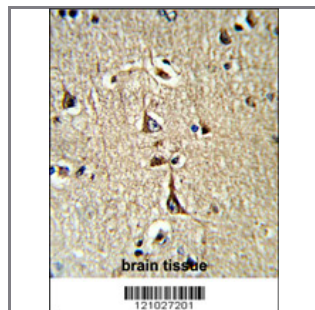
Catalog #	Applications:	Reactivity:	Accessions:
AP8507a	WB, FC, IHC, E	H, M	P21695

Concentration:	Size:	Isotype:	Clone Name:
0.25 mg/ml	0.1 mg	Rabbit Ig	RB21027

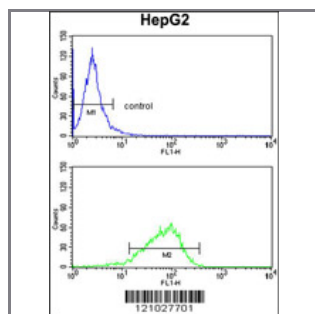
Application Data: Calculated MW: 37568 Da



Western blot analysis of GPD1 Antibody (N-term) (Cat. #AP8507a) in mouse brain tissue lysates (35ug/lane). GPD1 (arrow) was detected using the purified Pab.



Formalin-fixed and paraffin-embedded human brain tissue reacted with GPD1 Antibody (N-term), which was peroxidase-conjugated to the secondary antibody, followed by DAB staining. This data demonstrates the use of this antibody for immunohistochemistry; clinical relevance has not been evaluated.



GPD1 Antibody (N-term) (Cat.#AP8507a) flow cytometry analysis of HepG2 cells (bottom histogram) compared to a negative control cell (top histogram). FITC-conjugated goat-anti-rabbit secondary antibodies were used for the analysis.

Gene ID:	Gene Symbol:
2819	GPD1

Other Names:

Glycerol-3-phosphate dehydrogenase [NAD⁺], cytoplasmic; GPDH-C; GPD-C; GPD1

Target/Specificity:

This GPD1 antibody is generated from rabbits immunized with a KLH conjugated synthetic peptide between 35~65 amino acids from the N-terminal region of human GPD1.

Application Notes:

The suggested dilution is:

ELISA 1:1,000

Western blotting 1:100~500

Immunohistochemistry 1:50~100

Flow cytometric 1:10~50

Format:

Purified polyclonal antibody supplied in PBS with 0.09% (W/V) sodium azide. This antibody is purified through a protein A column, followed by peptide affinity purification.

Storage:

Maintain refrigerated at 2-8°C for up to 6 months. For long term storage store at -20°C in small aliquots to prevent freeze-thaw cycles.

Precautions:

GPD1 Antibody (N-term) is for research use only and not for use in diagnostic or therapeutic procedures.
