

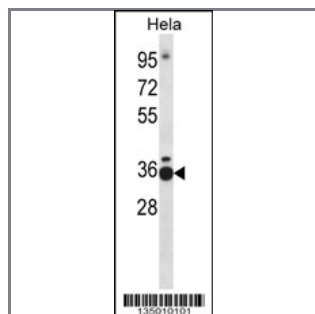
TCEA1 Antibody (Center)

Peptide Affinity Purified Rabbit Polyclonal Antibody (Pab)

Catalog #	Applications:	Reactivity:	Accessions:
AP14761c	WB, E	H	NP_006747.1 , P23193 , NP_958845.1
Concentration:	Size:	Isotype:	Clone Name:
0.25 mg/ml	0.1 mg	Rabbit Ig	RB35010

Application Data:

Calculated MW: 33970 Da



TCEA1 Antibody (Center) (Cat. #AP14761c) western blot analysis in HeLa cell line lysates (35ug/lane). This demonstrates the TCEA1 antibody detected the TCEA1 protein (arrow).

Gene ID:	Gene Symbol:
6917	TCEA1

Other Names:

Transcription elongation factor A protein 1;TCEA1;GTF2S; TFIIIS

Target/Specificity:

This TCEA1 antibody is generated from rabbits immunized with a KLH conjugated synthetic peptide between 97-126 amino acids from the Central region of human TCEA1.

Application Notes:

The suggested dilution is:

ELISA 1:1,000

Western blotting 1:100~500

Format:

Purified polyclonal antibody supplied in PBS with 0.09% (W/V) sodium azide. This antibody is purified through a protein A column, followed by peptide affinity purification.

Storage:

TCEA1 Antibody (Center) can be refrigerated at 2-8°C for up to 6 months. For long term storage, place the at -20°C.

Precautions:

TCEA1 Antibody (Center) is for research use only and not for use in diagnostic or therapeutic procedures.
