

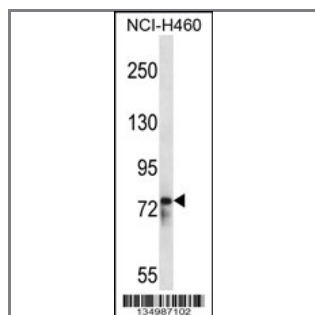
## RBM12 Antibody (Center)

### Peptide Affinity Purified Rabbit Polyclonal Antibody (Pab)

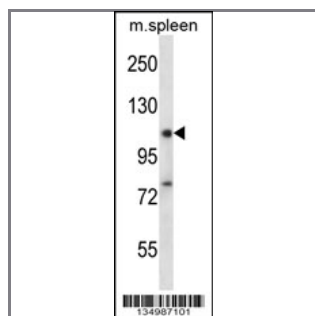
Catalog #	Applications:	Reactivity:	Accessions:
AP14758c	WB, E	H, M	<a href="#">NP_690051.1</a> , <a href="#">Q9NTZ6</a> , <a href="#">NP_006038.2</a>
Concentration:	Size:	Isotype:	Clone Name:
0.25 mg/ml	0.1 mg	Rabbit Ig	RB34987

#### Application Data:

Calculated MW: 97395 Da



RBM12 Antibody (Center) (Cat. #AP14758c) western blot analysis in NCI-H460 cell line lysates (35ug/lane). This demonstrates the RBM12 antibody detected the RBM12 protein (arrow).



RBM12 Antibody (Center) (Cat. #AP14758c) western blot analysis in mouse spleen tissue lysates (35ug/lane). This demonstrates the RBM12 antibody detected the RBM12 protein (arrow).

Gene ID:	Gene Symbol:
<a href="#">10137</a>	RBM12

#### Other Names:

RNA-binding protein 12;RBM12;KIAA0765

#### Target/Specificity:

This RBM12 antibody is generated from rabbits immunized with a KLH conjugated synthetic peptide between 574-603 amino acids from the Central region of human RBM12.

#### Application Notes:

The suggested dilution is:

ELISA 1:1,000

Western blotting 1:100~500

---

**Format:**

Purified polyclonal antibody supplied in PBS with 0.09% (W/V) sodium azide. This antibody is purified through a protein A column, followed by peptide affinity purification.

---

**Storage:**

RBM12 Antibody (Center) can be refrigerated at 2-8°C for up to 6 months. For long term storage, place the at -20°C.

---

**Precautions:**

RBM12 Antibody (Center) is for research use only and not for use in diagnostic or therapeutic procedures.

---