

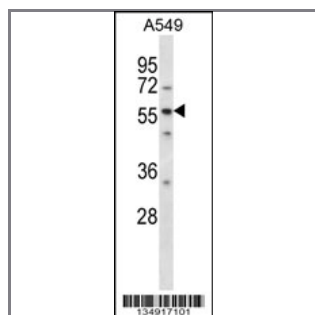
## LSM14A Antibody (C-term)

Peptide Affinity Purified Rabbit Polyclonal Antibody (Pab)

Catalog #	Applications:	Reactivity:	Accessions:
AP14733b	WB, E	H	<a href="#">Q8ND56</a> , <a href="#">NP_001107565.1</a> , <a href="#">NP_056393.2</a>
Concentration:	Size:	Isotype:	Clone Name:
0.25 mg/ml	0.1 mg	Rabbit Ig	RB34917

### Application Data:

Calculated MW: 50530 Da



LSM14A Antibody (C-term) (Cat. #AP14733b) western blot analysis in A549 cell line lysates (35ug/lane). This demonstrates the LSM14A antibody detected the LSM14A protein (arrow).

Gene ID:	Gene Symbol:
<a href="#">26065</a>	LSM14A

### Other Names:

Protein LSM14 homolog A; LSM14A; C19orf13; FAM61A; RAP55; RAP55A

### Target/Specificity:

This LSM14A antibody is generated from rabbits immunized with a KLH conjugated synthetic peptide between 310-340 amino acids from the C-terminal region of human LSM14A.

### Application Notes:

The suggested dilution is:

ELISA 1:1,000

Western blotting 1:100~500

### Format:

Purified polyclonal antibody supplied in PBS with 0.09% (W/V) sodium azide. This antibody is purified through a protein A column, followed by peptide affinity purification.

### Storage:

LSM14A Antibody (C-term) can be refrigerated at 2-8°C for up to 6 months. For long term storage, place the at -20°C.

---

**Precautions:**

LSM14A Antibody (C-term) is for research use only and not for use in diagnostic or therapeutic procedures.

---