

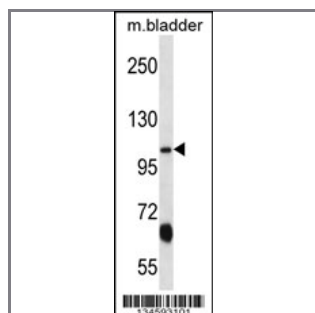
KCNQ3 Antibody (C-term)

Peptide Affinity Purified Rabbit Polyclonal Antibody (Pab)

Catalog #	Applications:	Reactivity:	Accessions:
AP14685b	WB, E	H(predict), M	NP_004510.1 , O43525
Concentration:	Size:	Isotype:	Clone Name:
0.25 mg/ml	0.1 mg	Rabbit Ig	RB34593

Application Data:

Calculated MW: 96742 Da



KCNQ3 Antibody (C-term) (Cat. #AP14685b) western blot analysis in mouse bladder tissue lysates (35ug/lane). This demonstrates the KCNQ3 antibody detected the KCNQ3 protein (arrow).

Gene ID:	Gene Symbol:
3786	KCNQ3

Other Names:

Potassium voltage-gated channel subfamily KQT member 3;KCNQ3;

Target/Specificity:

This KCNQ3 antibody is generated from rabbits immunized with a KLH conjugated synthetic peptide between 650-679 amino acids from the C-terminal region of human KCNQ3.

Application Notes:

The suggested dilution is:

ELISA 1:1,000

Western blotting 1:100~500

Format:

Purified polyclonal antibody supplied in PBS with 0.09% (W/V) sodium azide. This antibody is purified through a protein A column, followed by peptide affinity purification.

Storage:

KCNQ3 Antibody (C-term) can be refrigerated at 2-8°C for up to 6 months. For long term storage,

place the at -20°C.

Precautions:

KCNQ3 Antibody (C-term) is for research use only and not for use in diagnostic or therapeutic procedures.
