

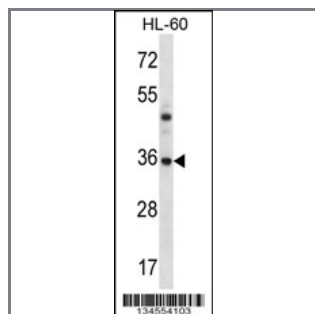
PSMB8 Antibody (N-term)

Peptide Affinity Purified Rabbit Polyclonal Antibody (Pab)

Catalog #	Applications:	Reactivity:	Accessions:
AP14577a	WB, E	H	NP_004150.1 , P28062 , NP_683720.2
Concentration:	Size:	Isotype:	Clone Name:
0.25 mg/ml	0.1 mg	Rabbit Ig	RB34554

Application Data:

Calculated MW: 30354 Da



PSMB8 Antibody (N-term) (Cat. #AP14577a) western blot analysis in HL-60 cell line lysates (35ug/lane). This demonstrates the PSMB8 antibody detected the PSMB8 protein (arrow).

Gene ID:	Gene Symbol:
5696	PSMB8

Other Names:

Proteasome subunit beta type-8; PSMB8; LMP7; PSMB5i; RING10; Y2

Target/Specificity:

This PSMB8 antibody is generated from rabbits immunized with a KLH conjugated synthetic peptide between 7-36 amino acids from the N-terminal region of human PSMB8.

Application Notes:

The suggested dilution is:

ELISA 1:1,000

Western blotting 1:100~500

Format:

Purified polyclonal antibody supplied in PBS with 0.09% (W/V) sodium azide. This antibody is purified through a protein A column, followed by peptide affinity purification.

Storage:

PSMB8 Antibody (N-term) can be refrigerated at 2-8°C for up to 6 months. For long term storage, place the at -20°C.

Precautions:

PSMB8 Antibody (N-term) is for research use only and not for use in diagnostic or therapeutic procedures.
