

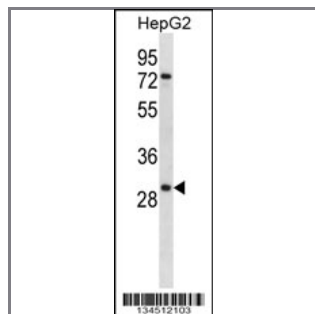
KLK10 Antibody (N-term)

Peptide Affinity Purified Rabbit Polyclonal Antibody (Pab)

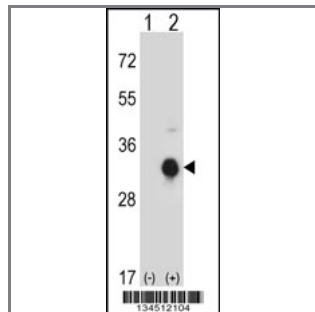
Catalog #	Applications:	Reactivity:	Accessions:
AP14557a	WB, E	H	NP_002767.2 , NP_665895.1 , NP_001070968.1 , O43240

Concentration:	Size:	Isotype:	Clone Name:
0.25 mg/ml	0.1 mg	Rabbit Ig	RB34512

Application Data: Calculated MW: 30138 Da



KLK10 Antibody (N-term) (Cat. #AP14557a) western blot analysis in HepG2 cell line lysates (35ug/lane). This demonstrates the KLK10 antibody detected the KLK10 protein (arrow).



Western blot analysis of KLK10 (arrow) using rabbit polyclonal KLK10 Antibody (N-term) (Cat. #AP14557a). 293 cell lysates (2 ug/lane) either nontransfected (Lane 1) or transiently transfected (Lane 2) with the KLK10 gene.

Gene ID:	Gene Symbol:
5655	KLK10

Other Names:

Kallikrein-10; KLK10; NES1; PRSSL1

Target/Specificity:

This KLK10 antibody is generated from rabbits immunized with a KLH conjugated synthetic peptide between 21-51 amino acids from the N-terminal region of human KLK10.

Application Notes:

The suggested dilution is:

ELISA 1:1,000

Western blotting 1:100~500

Format:

Purified polyclonal antibody supplied in PBS with 0.09% (W/V) sodium azide. This antibody is purified through a protein A column, followed by peptide affinity purification.

Storage:

KLK10 Antibody (N-term) can be refrigerated at 2-8°C for up to 6 months. For long term storage, place the at -20°C.

Precautions:

KLK10 Antibody (N-term) is for research use only and not for use in diagnostic or therapeutic procedures.
