

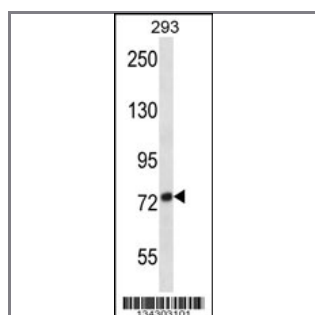
## ADAM32 Antibody (N-term)

### Peptide Affinity Purified Rabbit Polyclonal Antibody (Pab)

<b>Catalog #</b>	<b>Applications:</b>	<b>Reactivity:</b>	<b>Accessions:</b>
AP14513a	WB, E	H	<a href="#">Q8TC27</a> , <a href="#">NP_659441.3</a>
<b>Concentration:</b>	<b>Size:</b>	<b>Isotype:</b>	<b>Clone Name:</b>
0.25 mg/ml	0.1 mg	Rabbit Ig	RB34303

#### Application Data:

Calculated MW: 87948 Da



ADAM32 Antibody (N-term) (Cat. #AP14513a) western blot analysis in 293 cell line lysates (35ug/lane). This demonstrates the ADAM32 antibody detected the ADAM32 protein (arrow).

<b>Gene ID:</b>	<b>Gene Symbol:</b>
<a href="#">203102</a>	ADAM32

#### Other Names:

Disintegrin and metalloproteinase domain-containing protein 32;ADAM32;

#### Target/Specificity:

This ADAM32 antibody is generated from rabbits immunized with a KLH conjugated synthetic peptide between 140-169 amino acids from the N-terminal region of human ADAM32.

#### Application Notes:

The suggested dilution is:

ELISA 1:1,000

Western blotting 1:100~500

#### Format:

Purified polyclonal antibody supplied in PBS with 0.09% (W/V) sodium azide. This antibody is purified through a protein A column, followed by peptide affinity purification.

#### Storage:

ADAM32 Antibody (N-term) can be refrigerated at 2-8°C for up to 6 months. For long term

storage, place the at -20&deg;C.

---

**Precautions:**

ADAM32 Antibody (N-term) is for research use only and not for use in diagnostic or therapeutic procedures.

---