

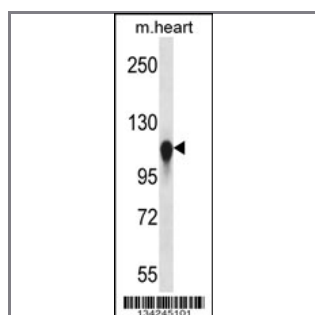
KIF5C Antibody (C-term)

Peptide Affinity Purified Rabbit Polyclonal Antibody (Pab)

Catalog #	Applications:	Reactivity:	Accessions:
AP14507b	WB, E	H(predict), M	NP_004513.1 , O60282
Concentration:	Size:	Isotype:	Clone Name:
0.25 mg/ml	0.1 mg	Rabbit Ig	RB34245

Application Data:

Calculated MW: 109495 Da



KIF5C Antibody (C-term) (Cat. #AP14507b) western blot analysis in mouse heart tissue lysates (35ug/lane). This demonstrates the KIF5C antibody detected the KIF5C protein (arrow).

Gene ID:	Gene Symbol:
3800	KIF5C

Other Names:

Kinesin heavy chain isoform 5C; KIF5C; KIAA0531; NKHC2

Target/Specificity:

This KIF5C antibody is generated from rabbits immunized with a KLH conjugated synthetic peptide between 757-786 amino acids from the C-terminal region of human KIF5C.

Application Notes:

The suggested dilution is:

ELISA 1:1,000

Western blotting 1:100~500

Format:

Purified polyclonal antibody supplied in PBS with 0.09% (W/V) sodium azide. This antibody is purified through a protein A column, followed by peptide affinity purification.

Storage:

KIF5C Antibody (C-term) can be refrigerated at 2-8°C for up to 6 months. For long term storage,

place the at -20°C.

Precautions:

KIF5C Antibody (C-term) is for research use only and not for use in diagnostic or therapeutic procedures.
