

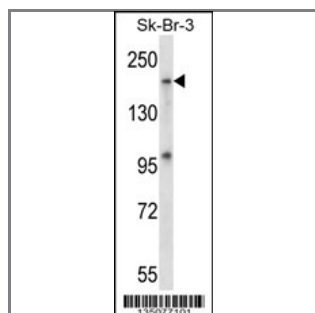
Mouse Map4k4 Antibody (Center)

Peptide Affinity Purified Rabbit Polyclonal Antibody (Pab)

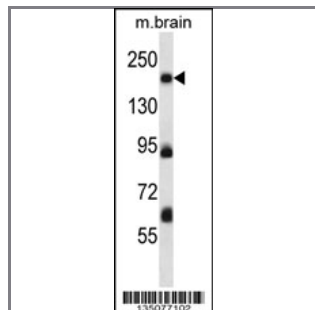
Catalog #	Applications:	Reactivity:	Accessions:
AP14459c	WB, E	H, M	NP_032722.2 , P97820
Concentration:	Size:	Isotype:	Clone Name:
0.25 mg/ml	0.1 mg	Rabbit Ig	RB35077

Application Data:

Calculated MW: 140602 Da



Mouse Map4k4 Antibody (Center) (Cat. #AP14459c) western blot analysis in SK-BR-3 cell line lysates (35ug/lane). This demonstrates the Map4k4 antibody detected the Map4k4 protein (arrow).



Mouse Map4k4 Antibody (Center) (Cat. #AP14459c) western blot analysis in mouse brain tissue lysates (35ug/lane). This demonstrates the Map4k4 antibody detected the Map4k4 protein (arrow).

Gene ID:	Gene Symbol:
26921	Map4k4

Other Names:

Mitogen-activated protein kinase kinase kinase kinase 4;Map4k4;Nik

Target/Specificity:

This Mouse Map4k4 antibody is generated from rabbits immunized with a KLH conjugated synthetic peptide between 505-534 amino acids from the Central region of Mouse Map4k4.

Application Notes:

The suggested dilution is:
ELISA 1:1,000

Western blotting 1:100~500

Format:

Purified polyclonal antibody supplied in PBS with 0.09% (W/V) sodium azide. This antibody is purified through a protein A column, followed by peptide affinity purification.

Storage:

Mouse Map4k4 Antibody (Center) can be refrigerated at 2-8°C for up to 6 months. For long term storage, place the at -20°C.

Precautions:

Mouse Map4k4 Antibody (Center) is for research use only and not for use in diagnostic or therapeutic procedures.
