

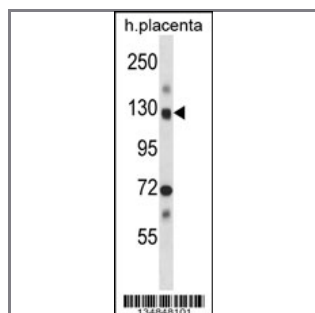
## Mouse Nek9 Antibody (Center)

### Peptide Affinity Purified Rabbit Polyclonal Antibody (Pab)

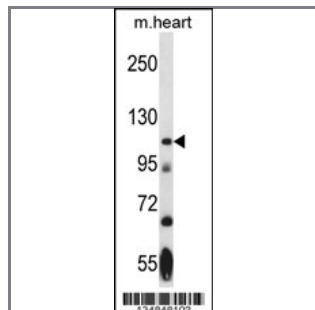
<b>Catalog #</b>	<b>Applications:</b>	<b>Reactivity:</b>	<b>Accessions:</b>
AP14450c	WB, E	H, M	<a href="#">Q8K1R7</a>
<b>Concentration:</b>	<b>Size:</b>	<b>Isotype:</b>	<b>Clone Name:</b>
0.25 mg/ml	0.1 mg	Rabbit Ig	RB34848

#### Application Data:

**Calculated MW: 107083 Da**



Mouse Nek9 Antibody (Center) (Cat. #AP14450c) western blot analysis in human placenta tissue lysates (35ug/lane). This demonstrates the Nek9 antibody detected the Nek9 protein (arrow).



Mouse Nek9 Antibody (Center) (Cat. #AP14450c) western blot analysis in mouse heart tissue lysates (35ug/lane). This demonstrates the Nek9 antibody detected the Nek9 protein (arrow).

**Gene ID:**

**Gene Symbol:**

Nek9

#### Other Names:

Serine/threonine-protein kinase Nek9; Nek9; Nercc

#### Target/Specificity:

This Mouse Nek9 antibody is generated from rabbits immunized with a KLH conjugated synthetic peptide between 502-530 amino acids from the Central region of Mouse Nek9.

#### Application Notes:

The suggested dilution is:  
ELISA 1:1,000

Western blotting 1:100~500

---

**Format:**

Purified polyclonal antibody supplied in PBS with 0.09% (W/V) sodium azide. This antibody is purified through a protein A column, followed by peptide affinity purification.

---

**Storage:**

Mouse Nek9 Antibody (Center) can be refrigerated at 2-8°C for up to 6 months. For long term storage, place the at -20°C.

---

**Precautions:**

Mouse Nek9 Antibody (Center) is for research use only and not for use in diagnostic or therapeutic procedures.

---