

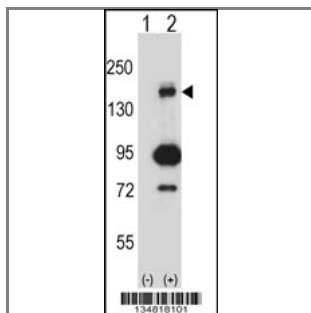
## Mouse Map3k5 Antibody (C-term)

Peptide Affinity Purified Rabbit Polyclonal Antibody (Pab)

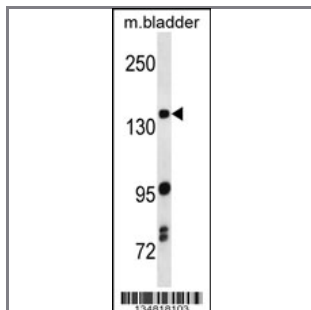
Catalog #	Applications:	Reactivity:	Accessions:
AP14442b	WB, E	H, M	<a href="#">O35099</a>
Concentration:	Size:	Isotype:	Clone Name:
0.25 mg/ml	0.1 mg	Rabbit Ig	RB34818

### Application Data:

Calculated MW: 154460 Da



Western blot analysis of Map3k5 (arrow) using rabbit polyclonal Mouse Map3k5 Antibody (C-term) (Cat. #AP14442b). 293 cell lysates (2 ug/lane) either nontransfected (Lane 1) or transiently transfected (Lane 2) with the Map3k5 gene.



Mouse Map3k5 Antibody (C-term) (Cat. #AP14442b) western blot analysis in mouse bladder tissue lysates (35ug/lane). This demonstrates the Map3k5 antibody detected the Map3k5 protein (arrow).

**Gene ID:**  
**Gene Symbol:**  
Map3k5

### Other Names:

Mitogen-activated protein kinase kinase kinase 5; Map3k5; Ask1; Mek5

### Target/Specificity:

This Mouse Map3k5 antibody is generated from rabbits immunized with a KLH conjugated synthetic peptide between 1174-1203 amino acids from the C-terminal region of Mouse Map3k5.

### Application Notes:

The suggested dilution is:  
ELISA 1:1,000

Western blotting 1:100~500

---

**Format:**

Purified polyclonal antibody supplied in PBS with 0.09% (W/V) sodium azide. This antibody is purified through a protein A column, followed by peptide affinity purification.

---

**Storage:**

Mouse Map3k5 Antibody (C-term) can be refrigerated at 2-8°C for up to 6 months. For long term storage, place the at -20°C.

---

**Precautions:**

Mouse Map3k5 Antibody (C-term) is for research use only and not for use in diagnostic or therapeutic procedures.

---