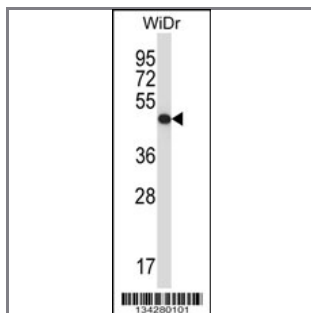


UQCRC2 Antibody (Center)

Peptide Affinity Purified Rabbit Polyclonal Antibody (Pab)

Catalog #	Applications:	Reactivity:	Accessions:
AP14382c	WB, E	H	NP_003357.2 , P22695
Concentration:	Size:	Isotype:	Clone Name:
0.25 mg/ml	0.1 mg	Rabbit Ig	RB34280

Application Data: Calculated MW: 48443 Da



UQCRC2 Antibody (Center) (Cat. #AP14382c) western blot analysis in WiDr cell line lysates (35ug/lane). This demonstrates the UQCRC2 antibody detected the UQCRC2 protein (arrow).

Gene ID:	Gene Symbol:
7385	UQCRC2

Other Names:

Cytochrome b-c1 complex subunit 2, mitochondrial;UQCRC2;

Target/Specificity:

This UQCRC2 antibody is generated from rabbits immunized with a KLH conjugated synthetic peptide between 234-264 amino acids from the Central region of human UQCRC2.

Application Notes:

The suggested dilution is:

ELISA 1:1,000

Western blotting 1:100~500

Format:

Purified polyclonal antibody supplied in PBS with 0.09% (W/V) sodium azide. This antibody is purified through a protein A column, followed by peptide affinity purification.

Storage:

UQCRC2 Antibody (Center) can be refrigerated at 2-8°C for up to 6 months. For long term

storage, place the at -20°C.

Precautions:

UQCRC2 Antibody (Center) is for research use only and not for use in diagnostic or therapeutic procedures.
