

## MARCH1 Antibody (Center)

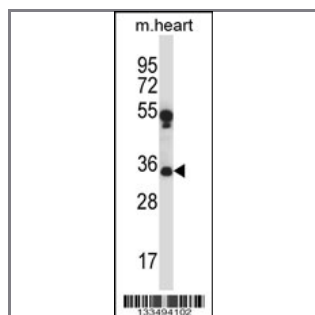
### Peptide Affinity Purified Rabbit Polyclonal Antibody (Pab)

Catalog #	Applications:	Reactivity:	Accessions:
AP14345c	WB, E	H(Predict), M	<a href="#">NP_060393.1</a> , <a href="#">NP_001159845.1</a> , <a href="#">Q8TCQ1</a>

Concentration:	Size:	Isotype:	Clone Name:
0.25 mg/ml	0.1 mg	Rabbit Ig	RB33494

#### Application Data:

Calculated MW: 32308 Da



MARCH1 Antibody (Center) (Cat. #AP14345c) western blot analysis in mouse heart tissue lysates (35ug/lane). This demonstrates the MARCH1 antibody detected the MARCH1 protein (arrow).

Gene ID:	Gene Symbol:
<a href="#">55016</a>	MARCH1

#### Other Names:

E3 ubiquitin-protein ligase MARCH1;MARCH1;RNF171

#### Target/Specificity:

This MARCH1 antibody is generated from rabbits immunized with a KLH conjugated synthetic peptide between 145-174 amino acids from the Central region of human MARCH1.

#### Application Notes:

The suggested dilution is:

ELISA 1:1,000

Western blotting 1:100~500

#### Format:

Purified polyclonal antibody supplied in PBS with 0.09% (W/V) sodium azide. This antibody is purified through a protein A column, followed by peptide affinity purification.

#### Storage:

MARCH1 Antibody (Center) can be refrigerated at 2-8°C for up to 6 months. For long term storage, place the at -20°C.

---

**Precautions:**

MARCH1 Antibody (Center) is for research use only and not for use in diagnostic or therapeutic procedures.

---