

## Mouse Pdgfra Antibody (Center)

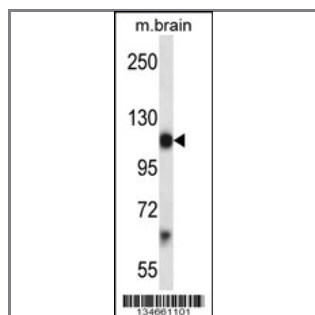
### Peptide Affinity Purified Rabbit Polyclonal Antibody (Pab)

Catalog #	Applications:	Reactivity:	Accessions:
AP14254c	WB, E	M	<a href="#">NP_035188.2</a> , <a href="#">NP_001076785.1</a> , <a href="#">P26618</a>

Concentration:	Size:	Isotype:	Clone Name:
0.25 mg/ml	0.1 mg	Rabbit Ig	RB34661

#### Application Data:

Calculated MW: 122683 Da



Mouse Pdgfra Antibody (Center) (Cat. #AP14254c) western blot analysis in mouse brain tissue lysates (35ug/lane). This demonstrates the Pdgfra antibody detected the Pdgfra protein (arrow).

Gene ID:	Gene Symbol:
<a href="#">18595</a>	Pdgfra

#### Other Names:

Alpha-type platelet-derived growth factor receptor;Pdgfra;

#### Target/Specificity:

This Mouse Pdgfra antibody is generated from rabbits immunized with a KLH conjugated synthetic peptide between 677-706 amino acids from the Central region of Mouse Pdgfra.

#### Application Notes:

The suggested dilution is:

ELISA 1:1,000

Western blotting 1:100~500

#### Format:

Purified polyclonal antibody supplied in PBS with 0.09% (W/V) sodium azide. This antibody is purified through a protein A column, followed by peptide affinity purification.

#### Storage:

Mouse Pdgfra Antibody (Center) can be refrigerated at 2-8°C for up to 6 months. For long term storage, place the at -20°C.

---

**Precautions:**

Mouse Pdgfra Antibody (Center) is for research use only and not for use in diagnostic or therapeutic procedures.

---