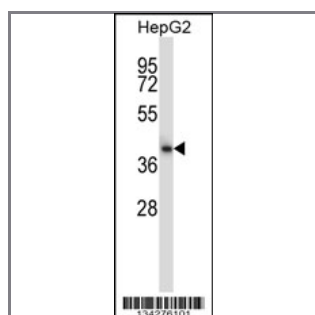


## CIAO1 Antibody (Center)

### Peptide Affinity Purified Rabbit Polyclonal Antibody (Pab)

<b>Catalog #</b>	<b>Applications:</b>	<b>Reactivity:</b>	<b>Accessions:</b>
AP14244c	WB, E	H	<a href="#">NP_004795.1</a> , <a href="#">O76071</a>
<b>Concentration:</b>	<b>Size:</b>	<b>Isotype:</b>	<b>Clone Name:</b>
0.25 mg/ml	0.1 mg	Rabbit Ig	RB34276

#### Application Data: Calculated MW: 37840 Da



CIAO1 Antibody (Center) (Cat. #AP14244c) western blot analysis in HepG2 cell line lysates (35ug/lane). This demonstrates the CIAO1 antibody detected the CIAO1 protein (arrow).

<b>Gene ID:</b>	<b>Gene Symbol:</b>
<a href="#">9391</a>	CIAO1

#### Other Names:

Probable cytosolic iron-sulfur protein assembly protein CIAO1;CIAO1;WDR39

#### Target/Specificity:

This CIAO1 antibody is generated from rabbits immunized with a KLH conjugated synthetic peptide between 154-183 amino acids from the Central region of human CIAO1.

#### Application Notes:

The suggested dilution is:  
 ELISA 1:1,000  
 Western blotting 1:100~500

#### Format:

Purified polyclonal antibody supplied in PBS with 0.09% (W/V) sodium azide. This antibody is purified through a protein A column, followed by peptide affinity purification.

#### Storage:

CIAO1 Antibody (Center) can be refrigerated at 2-8°C for up to 6 months. For long term storage,

place the at -20&deg;C.

---

**Precautions:**

CIAO1 Antibody (Center) is for research use only and not for use in diagnostic or therapeutic procedures.

---