

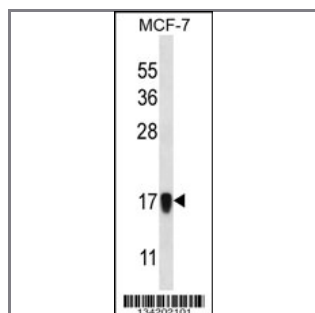
NDUFA13 Antibody (N-term)

Peptide Affinity Purified Rabbit Polyclonal Antibody (Pab)

| | | | |
|-----------------------|----------------------|--------------------|--|
| Catalog # | Applications: | Reactivity: | Accessions: |
| AP14220a | WB, E | H | NP_057049.5 , Q9P0J0 |
| Concentration: | Size: | Isotype: | Clone Name: |
| 0.25 mg/ml | 0.1 mg | Rabbit Ig | RB34202 |

Application Data:

Calculated MW: 16698 Da



NDUFA13 Antibody (N-term) (Cat. #AP14220a) western blot analysis in MCF-7 cell line lysates (35ug/lane). This demonstrates the NDUFA13 antibody detected the NDUFA13 protein (arrow).

| | |
|-----------------------|---------------------|
| Gene ID: | Gene Symbol: |
| 51079 | NDUFA13 |

Other Names:

NADH dehydrogenase [ubiquinone] 1 alpha subcomplex subunit 13;NDUFA13;GRIM19

Target/Specificity:

This NDUFA13 antibody is generated from rabbits immunized with a KLH conjugated synthetic peptide between 1-30 amino acids from the N-terminal region of human NDUFA13.

Application Notes:

The suggested dilution is:

ELISA 1:1,000

Western blotting 1:100~500

Format:

Purified polyclonal antibody supplied in PBS with 0.09% (W/V) sodium azide. This antibody is purified through a protein A column, followed by peptide affinity purification.

Storage:

NDUFA13 Antibody (N-term) can be refrigerated at 2-8°C for up to 6 months. For long term

storage, place the at -20°C.

Precautions:

NDUFA13 Antibody (N-term) is for research use only and not for use in diagnostic or therapeutic procedures.
