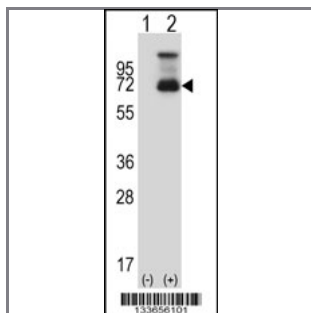


HSF1 Antibody (N-term)

Peptide Affinity Purified Rabbit Polyclonal Antibody (Pab)

Catalog #	Applications:	Reactivity:	Accessions:
AP14189a	WB, E	H	Q00613 , NP_005517.1
Concentration:	Size:	Isotype:	Clone Name:
0.25 mg/ml	0.1 mg	Rabbit Ig	RB33656

Application Data: Calculated MW: 57260 Da



Western blot analysis of HSF1 (arrow) using rabbit polyclonal HSF1 Antibody (N-term) (Cat. #AP14189a). 293 cell lysates (2 ug/lane) either nontransfected (Lane 1) or transiently transfected (Lane 2) with the HSF1 gene.

Gene ID:	Gene Symbol:
3297	HSF1

Other Names:

Heat shock factor protein 1;HSF1;HSTF1

Target/Specificity:

This HSF1 antibody is generated from rabbits immunized with a KLH conjugated synthetic peptide between 71-100 amino acids from the N-terminal region of human HSF1.

Application Notes:

The suggested dilution is:
 ELISA 1:1,000
 Western blotting 1:100~500

Format:

Purified polyclonal antibody supplied in PBS with 0.09% (W/V) sodium azide. This antibody is purified through a protein A column, followed by peptide affinity purification.

Storage:

HSF1 Antibody (N-term) can be refrigerated at 2-8°C for up to 6 months. For long term storage,

place the at -20°C.

Precautions:

HSF1 Antibody (N-term) is for research use only and not for use in diagnostic or therapeutic procedures.
