

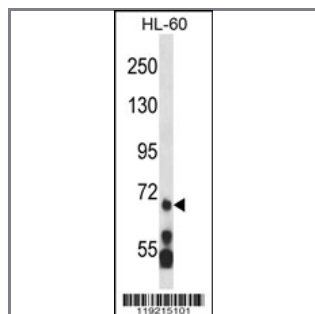
MLL5 Antibody (N-term)

Peptide Affinity Purified Rabbit Polyclonal Antibody (Pab)

Catalog #	Applications:	Reactivity:	Accessions:
AP14173a	WB, E	H	NP_891847.1 , NP_061152.3 , Q8NFF8
Concentration:	Size:	Isotype:	Clone Name:
0.25 mg/ml	0.1 mg	Rabbit Ig	RB19215

Application Data:

Calculated MW: 70kd Isoform 3. 204965 Da



MLL5 Antibody (N-term) (Cat. #AP14173a) western blot analysis in HL-60 cell line lysates (35ug/lane). This demonstrates the MLL5 antibody detected the MLL5 protein (arrow).

Gene ID:	Gene Symbol:
55904	MLL5

Other Names:

Histone-lysine N-methyltransferase MLL5;MLL5;KMT2E

Target/Specificity:

This MLL5 antibody is generated from rabbits immunized with a KLH conjugated synthetic peptide between 92-121 amino acids from the N-terminal region of human MLL5.

Application Notes:

The suggested dilution is:

ELISA 1:1,000

Western blotting 1:100~500

Format:

Purified polyclonal antibody supplied in PBS with 0.09% (W/V) sodium azide. This antibody is purified through a protein A column, followed by peptide affinity purification.

Storage:

MLL5 Antibody (N-term) can be refrigerated at 2-8°C for up to 6 months. For long term storage, place the at -20°C.

Precautions:

MLL5 Antibody (N-term) is for research use only and not for use in diagnostic or therapeutic procedures.
