

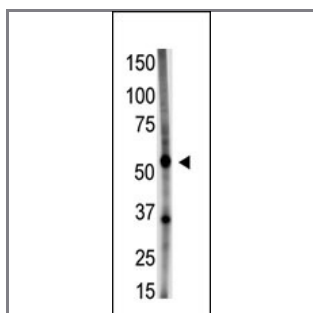
GDF5 Antibody (N-term)

Purified Rabbit Polyclonal Antibody (Pab)

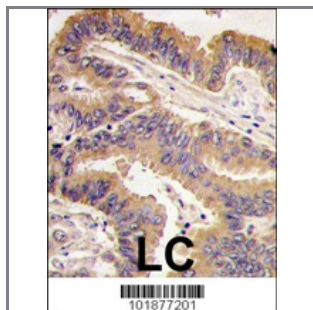
Catalog #	Applications:	Reactivity:	Accessions:
AP2067a	WB, E	H	P43026 , NP_000548
Concentration:	Size:	Isotype:	Clone Name:
0.25 mg/ml	0.1 mg	Rabbit Ig	RB1877

Application Data:

Calculated MW: 55410 Da



The anti-GDF5 N-term Pab (Cat. #AP2067a) is used in Western blot to detect GDF5 in A549 cell lysate.



Formalin-fixed and paraffin-embedded human lung carcinoma tissue reacted with GDF5 antibody (N-term), which was peroxidase-conjugated to the secondary antibody, followed by DAB staining. This data demonstrates the use of this antibody for immunohistochemistry; clinical relevance has not been evaluated.

Gene ID:	Gene Symbol:
8200	GDF5

Other Names:

Target/Specificity:

This GDF5 antibody is generated from rabbits immunized with a KLH conjugated synthetic peptide between 20~49 amino acids from the N-terminal region of human GDF5.

Application Notes:

The suggested dilution is:

ELISA 1:1,000

Western blotting 1:100~500

Format:

Purified polyclonal antibody supplied in PBS with 0.09% (W/V) sodium azide. This antibody is purified through a protein G column, eluted with high and low pH buffers and neutralized immediately, followed by dialysis against PBS.

Storage:

Maintain refrigerated at 2-8°C for up to 6 months. For long term storage store at -20°C in small aliquots to prevent freeze-thaw cycles.

Precautions:

GDF5 Antibody (N-term) is for research use only and not for use in diagnostic or therapeutic procedures.
