

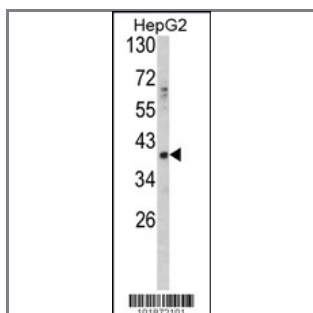
GDF1 Antibody (N-term)

Purified Rabbit Polyclonal Antibody (Pab)

Catalog #	Applications:	Reactivity:	Accessions:
AP2063a	WB, E	H	

Concentration:	Size:	Isotype:	Clone Name:
0.25 mg/ml	0.1 mg	Rabbit Ig	RB1872

Application Data: **Calculated MW: 39502 Da**



Western blot analysis of GDF1 Antibody (N-term) (Cat. #AP2063a) in HepG2 cell line lysates (35ug/lane). GDF1 (arrow) was detected using the purified Pab.



Formalin-fixed and paraffin-embedded human brain tissue reacted with GDF1 antibody (N-term), which was peroxidase-conjugated to the secondary antibody, followed by DAB staining. This data demonstrates the use of this antibody for immunohistochemistry; clinical relevance has not been evaluated.

Gene ID:	Gene Symbol:
2657	GDF1

Other Names:

Target/Specificity:

This GDF1 antibody is generated from rabbits immunized with a KLH conjugated synthetic peptide between 37~67 amino acids from the N-terminal region of human GDF1.

Application Notes:

The suggested dilution is:

ELISA 1:1,000

Western blotting 1:100~500

Format:

Purified polyclonal antibody supplied in PBS with 0.09% (W/V) sodium azide. This antibody is purified through a protein G column, eluted with high and low pH buffers and neutralized immediately, followed by dialysis against PBS.

Storage:

Maintain refrigerated at 2-8°C for up to 6 months. For long term storage store at -20°C in small aliquots to prevent freeze-thaw cycles.

Precautions:

GDF1 Antibody (N-term) is for research use only and not for use in diagnostic or therapeutic procedures.
