

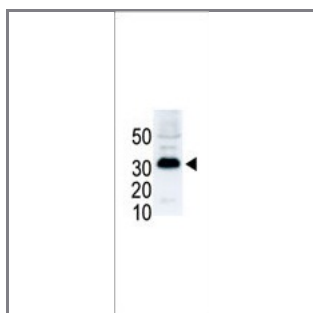
## SNAIL Antibody (N-term D24)

### Purified Rabbit Polyclonal Antibody (Pab)

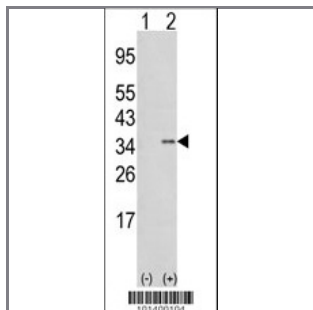
Catalog #	Applications:	Reactivity:	Accessions:
AP2054a	WB, IHC, E	H	<a href="#">O95863</a>

Concentration:	Size:	Isotype:	Clone Name:
0.25 mg/ml	0.1 mg	Rabbit Ig	RB1400

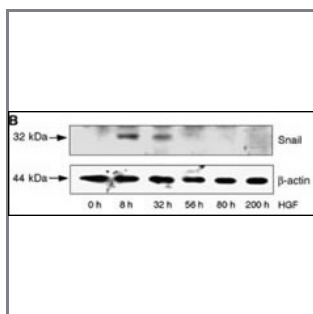
#### Application Data: Calculated MW: 29083 Da



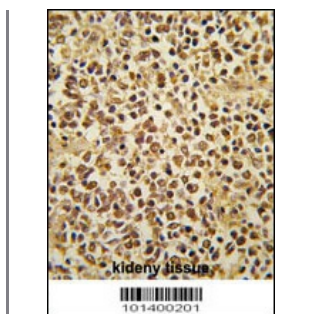
The anti-SNAIL Pab (Cat. #AP2054a) is used in Western blot to detect SNAIL in Snail-293 cells (flag-tagged). Data is kindly provided by Stefan Grotegut from University of Basel (Switzerland).



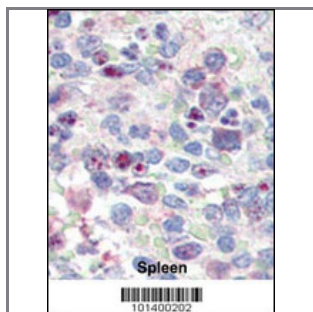
Western blot analysis of SNAIL (arrow) using rabbit polyclonal hSNAIL-D24 (Cat. #AP2054a). 293 cell lysates (2 ug/lane) either nontransfected (Lane 1) or transiently transfected with the SNAIL gene (Lane 2).



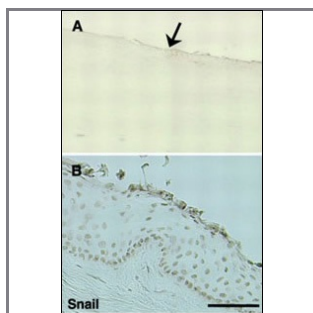
HepG2 cells were incubated with HGF for the time periods indicated. LiCl and MG132 were added 8 h before lysis of the cells. Snail protein levels and  $\beta$ -actin as loading control were analyzed by WB.



Formalin-fixed and paraffin-embedded human kidney tissue reacted with SNAIL antibody (N-term D24) (Cat.#AP2054a), which was peroxidase-conjugated to the secondary antibody, followed by DAB staining. This data demonstrates the use of this antibody for immunohistochemistry; clinical relevance has not been evaluated.



Formalin-fixed and paraffin-embedded human Spleen tissue reacted with SNAIL antibody (N-term D24) (Cat.#AP2054a), which was peroxidase-conjugated to the secondary antibody, followed by AEC staining. This data demonstrates the use of this antibody for immunohistochemistry; clinical relevance has not been evaluated.



Immunohistochemistry of E-cadherin repressors. (A) Composite micrograph of Snail immunohistochemistry. Snail was observed in PECs from the head to the body of the pterygium. Arrow: pterygial head. (B) Strong expression of Snail observed in the nucleus of PECs.

**Gene ID:**

6615

**Gene Symbol:**

SNAIL

**Other Names:**

"Zinc finger protein SNAIL1, Snail protein homolog, Sna protein"

**Target/Specificity:**

This SNAIL antibody is generated from rabbits immunized with a KLH conjugated synthetic peptide between 17~46 amino acids from the N-terminal region of human Snail.

**Application Notes:**

The suggested dilution will be:

ELISA 1:1,000

Western blotting 1:100~500

Immunohistochemistry 1:50~100

**Format:**

Purified polyclonal antibody supplied in PBS with 0.09% (W/V) sodium azide. This antibody is purified through a protein G column, eluted with high and low pH buffers and neutralized immediately, followed

by dialysis against PBS.

---

**Storage:**

Maintain refrigerated at 2-8°C for up to 6 months. For long term storage store at -20°C in small aliquots to prevent freeze-thaw cycles.

---

**Precautions:**

SNAIL Antibody (N-term D24) is for research use only and not for use in diagnostic or therapeutic procedures.

---