

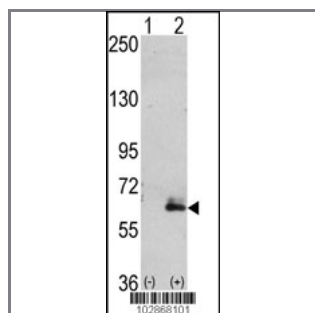
MAP2 Antibody (C-term)

Purified Rabbit Polyclonal Antibody (Pab)

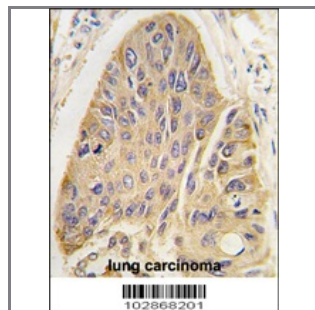
Catalog #	Applications:	Reactivity:	Accessions:
AP2018b	WB, IHC, E	H	P11137

Concentration:	Size:	Isotype:	Clone Name:
0.25 mg/ml	0.1 mg	Rabbit Ig	RB02868

Application Data: Calculated MW: 199610 Da



Western blot analysis of hMAP2-Q425 (arrow) using rabbit polyclonal hMAP2-Q425 Antibody (RB02868). 293 cell lysates (2 ug/lane) either nontransfected (Lane 1) or transiently transfected with the hMAP2-Q425 gene (Lane 2) (Origene Technologies).



Formalin-fixed and paraffin-embedded human lung carcinoma tissue reacted with hMAP2-Q425 antibody, which was peroxidase-conjugated to the secondary antibody, followed by DAB staining. This data demonstrates the use of this antibody for immunohistochemistry.

Gene ID:	Gene Symbol:
4133	MAP2

Other Names:

Microtubule-associated protein 2; MAP-2; MAP2

Target/Specificity:

This MAP2 antibody is generated from rabbits immunized with a KLH conjugated synthetic peptide between 418~447 amino acids from the C-terminal region of human MAP2.

Application Notes:

The suggested dilution will be:
ELISA 1:1,000

Immunohistochemistry 1:50~100

Western Blot 1:100~500

Format:

Purified polyclonal antibody supplied in PBS with 0.09% (W/V) sodium azide. This antibody is purified through a protein G column, eluted with high and low pH buffers and neutralized immediately, followed by dialysis against PBS.

Storage:

Maintain refrigerated at 2-8°C for up to 6 months. For long term storage store at -20°C in small aliquots to prevent freeze-thaw cycles.

Precautions:

MAP2 Antibody (C-term) is for research use only and not for use in diagnostic or therapeutic procedures.
