

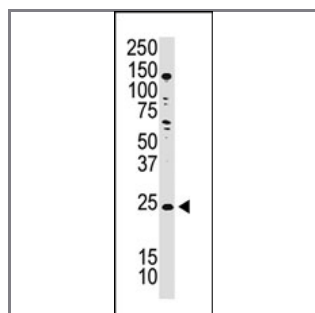
Podoplanin / GP36 / T1A-2 Antibody (N-term)

Purified Rabbit Polyclonal Antibody (Pab)

Catalog #	Applications:	Reactivity:	Accessions:
AP2016b	WB, E	H	NP_006465 , Q86YL7
Concentration:	Size:	Isotype:	Clone Name:
0.25 mg/ml	0.1 mg	Rabbit Ig	RB2849

Application Data:

Calculated MW: 16684 Da



Western blot analysis of anti-T1A-2 Pab (Cat. #AP2016b) in NCI-H460 cell lysate. T1A-2 (Arrow) was detected using purified Pab. Secondary HRP-anti-rabbit was used for signal visualization with chemiluminescence.

Gene ID:	Gene Symbol:
10630	PDPN

Other Names:

"GP36, HT1A-1, hT1a-1, lung type-I cell membrane-associated glycoprotein, podoplanin"

Target/Specificity:

This Podoplanin / GP36 / T1A-2 antibody is generated from rabbits immunized with a KLH conjugated synthetic peptide between 41~70 amino acids from the N-terminal region of human T1A-2.

Application Notes:

The suggested dilution will be:

ELISA 1:1,000

Western blotting 1:100~500

Format:

Purified polyclonal antibody supplied in PBS with 0.09% (W/V) sodium azide. This antibody is purified through a protein G column, eluted with high and low pH buffers and neutralized immediately, followed by dialysis against PBS.

Storage:

Maintain refrigerated at 2-8°C for up to 6 months. For long term storage store at -20°C in small aliquots to prevent freeze-thaw cycles.

Precautions:

Podoplanin / GP36 / TIA-2 Antibody (N-term) is for research use only and not for use in diagnostic or therapeutic procedures.
