

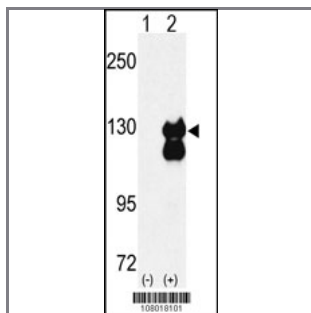
## RENT1 Antibody (N-term E22)

Purified Rabbit Polyclonal Antibody (Pab)

Catalog #	Applications:	Reactivity:	Accessions:
AP1905a	WB, E	H	<a href="#">Q92900</a>

Concentration:	Size:	Isotype:	Clone Name:
0.25 mg/ml	0.1 mg	Rabbit Ig	RB8018

**Application Data:** **Calculated MW: 124345 Da**



Western blot analysis of RENT1 (arrow) using rabbit polyclonal RENT1 Antibody (N-term E22) (Cat.#AP1905a). 293 cell lysates (2 ug/lane) either nontransfected (Lane 1) or transiently transfected with the RENT1 gene (Lane 2) (Origene Technologies).

Gene ID:	Gene Symbol:
<a href="#">5976</a>	UPF1

### Other Names:

Regulator of nonsense transcripts 1; ATP-dependent helicase RENT1; Nonsense mRNA reducing factor 1; NORF1; Up-frameshift suppressor 1 homolog; hUpf1; RENT1; KIAA0221; UPF1;

### Target/Specificity:

This RENT1 antibody is generated from rabbits immunized with a KLH conjugated synthetic peptide between 14~44 amino acids from the N-terminal region of human RENT1.

### Application Notes:

The suggested dilution is:  
 ELISA 1:1,000  
 Western Blot 1:100~500

### Format:

Purified polyclonal antibody supplied in PBS with 0.09% (W/V) sodium azide. This antibody is prepared by Saturated Ammonium Sulfate (SAS) precipitation followed by dialysis against PBS.

### Storage:

Maintain refrigerated at 2-8°C for up to 6 months. For long term storage store at -20°C in small aliquots to prevent freeze-thaw cycles.

---

**Precautions:**

RENT1 Antibody (N-term E22) is for research use only and not for use in diagnostic or therapeutic procedures.

---