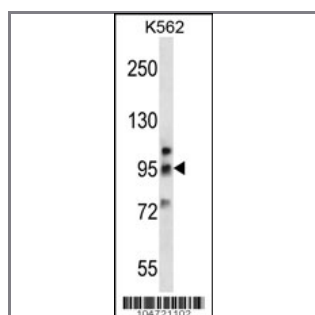


Metabotropic Glutamate Receptor 6 (GPRC1F) Antibody (C-term)

Peptide Affinity Purified Rabbit Polyclonal Antibody (Pab)

Catalog #	Applications:	Reactivity:	Accessions:
AP1642a	WB, IHC, E	H	O15303 , NP_000834
Concentration:	Size:	Isotype:	Clone Name:
0.25 mg/ml	0.1 mg	Rabbit Ig	RB4721

Application Data: **Calculated MW: 95436 Da**



GPRC1F Antibody (P847) (Cat. #AP1642a) western blot analysis in K562 cell line lysates (35ug/lane). This demonstrates the GPRC1F antibody detected the GPRC1F protein (arrow).

Gene ID: **Gene Symbol:**

[2916](#)

Other Names:

Target/Specificity:

This GPRC1F antibody is generated from rabbits immunized with a KLH conjugated synthetic peptide selected from the C-terminal region of human GPRC1F.

Application Notes:

The suggested dilution is:

ELISA 1:1,000

Western blotting 1:100~500

Immunohistochemistry 1:50~100

Format:

Purified polyclonal antibody supplied in PBS with 0.09% (W/V) sodium azide. This antibody is purified through a protein A column, followed by peptide affinity purification.

Storage:

Maintain refrigerated at 2-8°C for up to 6 months. For long term storage store at -20°C in small

aliquots to prevent freeze-thaw cycles.

Precautions:

Metabotropic Glutamate Receptor 6 (GPRC1F) Antibody (C-term) is for research use only and not for use in diagnostic or therapeutic procedures.
