

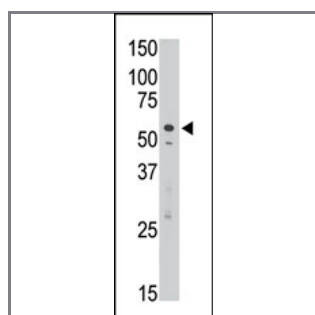
## SIGLEC7 (D-siglec) Antibody (C-term H422)

Purified Rabbit Polyclonal Antibody (Pab)

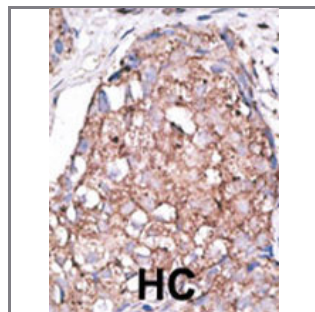
<b>Catalog #</b>	<b>Applications:</b>	<b>Reactivity:</b>	<b>Accessions:</b>
AP1633c	WB, IHC, E	H	<a href="#">Q9Y286</a>
<b>Concentration:</b>	<b>Size:</b>	<b>Isotype:</b>	<b>Clone Name:</b>
0.25 mg/ml	0.1 mg	Rabbit Ig	RB2715

### Application Data:

**Calculated MW: 51142 Da**



The anti-DSiglec C-term H422 Pab (Cat. #AP1633c) is used in Western blot to detect DSiglec in Jurkat cell lysate.



Formalin-fixed and paraffin-embedded human cancer tissue reacted with the primary antibody, which was peroxidase-conjugated to the secondary antibody, followed by AEC staining. This data demonstrates the use of this antibody for immunohistochemistry; clinical relevance has not been evaluated. BC = breast carcinoma; HC = hepatocarcinoma.

<b>Gene ID:</b>	<b>Gene Symbol:</b>
<a href="#">27036</a>	SIGLEC7

### Other Names:

Siglec-7, QA79 membrane protein, Adhesion inhibitory receptor molecule-1, AIRM-1, p75, D-siglec, SIGLEC7, AIRM1

### Target/Specificity:

This SIGLEC7 antibody is generated from rabbits immunized with a KLH conjugated synthetic peptide selected from the C-terminal region of human D-siglec.

### Application Notes:

The suggested dilution is:

ELISA 1:1,000  
Western blotting 1:100~500  
Immunohistochemistry 1:50~100

---

**Format:**

Purified polyclonal antibody supplied in PBS with 0.09% (W/V) sodium azide. This antibody is purified through a protein G column, eluted with high and low pH buffers and neutralized immediately, followed by dialysis against PBS.

---

**Storage:**

Maintain refrigerated at 2-8°C for up to 6 months. For long term storage store at -20°C in small aliquots to prevent freeze-thaw cycles.

---

**Precautions:**

SIGLEC7 (D-siglec) Antibody (C-term H422) is for research use only and not for use in diagnostic or therapeutic procedures.

---