

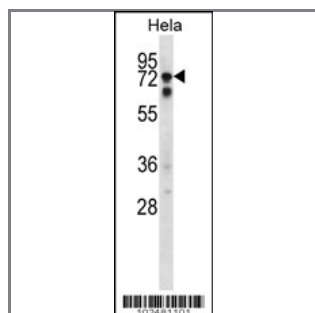
SIGLEC10 Antibody (C-term)

Peptide Affinity Purified Rabbit Polyclonal Antibody (Pab)

Catalog #	Applications:	Reactivity:	Accessions:
AP1628b	WB, E	H	Q96LC7
Concentration:	Size:	Isotype:	Clone Name:
0.25 mg/ml	0.1 mg	Rabbit Ig	RB2481

Application Data:

Calculated MW: 76619 Da



SIGLEC10 Antibody (Cat. #AP1628b) western blot analysis in HeLa cell line lysates (35ug/lane). This demonstrates the SIGLEC10 antibody detected the SIGLEC10 protein (arrow).

Gene ID:	Gene Symbol:
89790	SIGLEC10

Other Names:

Sialic acid binding Ig-like lectin 10; Siglec-like protein 2

Target/Specificity:

This SIGLEC10 antibody is generated from rabbits immunized with a KLH conjugated synthetic peptide selected from the C-terminal region of human SIGLEC10.

Application Notes:

The suggested dilution will be:
 ELISA 1:1,000
 Western blotting 1:100~500

Format:

Purified polyclonal antibody supplied in PBS with 0.09% (W/V) sodium azide. This antibody is purified through a protein A column, followed by peptide affinity purification.

Storage:

Maintain refrigerated at 2-8°C for up to 6 months. For long term storage store at -20°C in small

aliquots to prevent freeze-thaw cycles.

Precautions:

SIGLEC10 Antibody (C-term) is for research use only and not for use in diagnostic or therapeutic procedures.
