

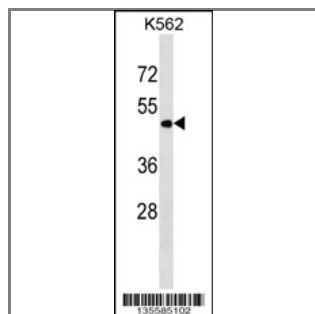
## PNPLA3 Antibody (N-term)

### Peptide Affinity Purified Rabbit Polyclonal Antibody (Pab)

Catalog #	Applications:	Reactivity:	Accessions:
AP16280a	WB, E	H	<a href="#">NP_079501.2</a> , <a href="#">Q9NST1</a>
Concentration:	Size:	Isotype:	Clone Name:
0.25 mg/ml	0.1 mg	Rabbit Ig	RB35585

#### Application Data:

Calculated MW: 52865 Da



PNPLA3 Antibody (N-term) (Cat. #AP16280a) western blot analysis in K562 cell line lysates (35ug/lane). This demonstrates the PNPLA3 antibody detected the PNPLA3 protein (arrow).

Gene ID:	Gene Symbol:
<a href="#">80339</a>	PNPLA3

#### Other Names:

Patatin-like phospholipase domain-containing protein 3; PNPLA3; ADPN; C22orf20

#### Target/Specificity:

This PNPLA3 antibody is generated from rabbits immunized with a KLH conjugated synthetic peptide between 108-137 amino acids from the N-terminal region of human PNPLA3.

#### Application Notes:

The suggested dilution is:

ELISA 1:1,000

Western blotting 1:100~500

#### Format:

Purified polyclonal antibody supplied in PBS with 0.09% (W/V) sodium azide. This antibody is purified through a protein A column, followed by peptide affinity purification.

#### Storage:

PNPLA3 Antibody (N-term) can be refrigerated at 2-8°C for up to 6 months. For long term storage, place the at -20°C.

---

**Precautions:**

PNPLA3 Antibody (N-term) is for research use only and not for use in diagnostic or therapeutic procedures.

---