

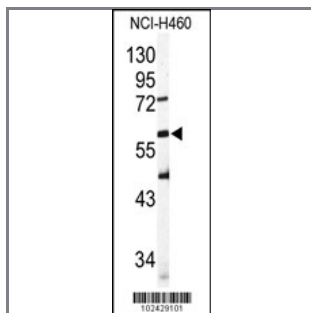
## SIGLEC6 Antibody (N-term)

### Purified Rabbit Polyclonal Antibody (Pab)

Catalog #	Applications:	Reactivity:	Accessions:
AP1624a	WB, E	H	<a href="#">O43699</a>

Concentration:	Size:	Isotype:	Clone Name:
0.25 mg/ml	0.1 mg	Rabbit Ig	RB2429/2430

#### Application Data: Calculated MW: 49913 Da



Western blot analysis of SIGLEC6 Antibody (N-term) (Cat#AP1624a) in NCI-H460 cell line lysates (35ug/lane). SIGLEC6 (arrow) was detected using the purified Pab.

Gene ID:	Gene Symbol:
<a href="#">946</a>	SIGLEC6

#### Other Names:

Sialic acid binding Ig-like lectin 6; Obesity-binding protein 1; OB-BP1; CD33 antigen-like 1

#### Target/Specificity:

This SIGLEC6 antibody is generated from rabbits immunized with a KLH conjugated synthetic peptide between 16~45 amino acids from the N-terminal region of human SIGLEC6.

#### Application Notes:

The suggested dilution will be:

ELISA 1:1,000

Western Blot 1:50~100

#### Format:

Purified polyclonal antibody supplied in PBS with 0.09% (W/V) sodium azide. This antibody is purified through a protein G column, eluted with high and low pH buffers and neutralized immediately, followed by dialysis against PBS.

#### Storage:

Maintain refrigerated at 2-8°C for up to 6 months. For long term storage store at -20°C in small aliquots to prevent freeze-thaw cycles.

---

**Precautions:**

SIGLEC6 Antibody (N-term) is for research use only and not for use in diagnostic or therapeutic procedures.

---