

CD33 (SIGLEC3) Antibody (N-term)

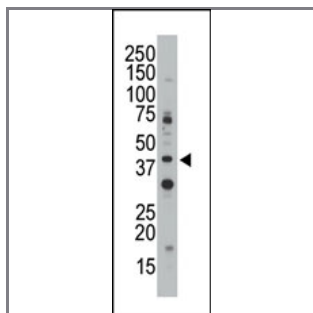
Purified Rabbit Polyclonal Antibody (Pab)

Catalog #	Applications:	Reactivity:	Accessions:
AP1622a	WB, IHC, E	H	P20138

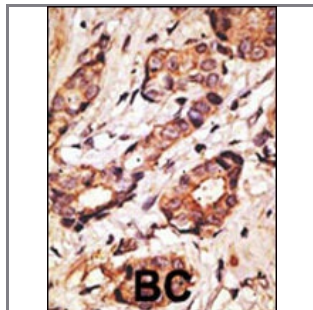
Concentration:	Size:	Isotype:	Clone Name:
0.25 mg/ml	0.1 mg	Rabbit Ig	RB2425

Application Data:

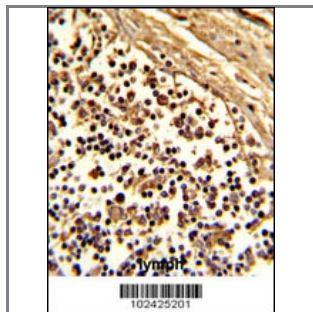
Calculated MW: 39825 Da



The anti-Siglec3 N-term Pab (Cat. #AP1622a) is used in Western blot to detect Siglec3 in Jurkat cell lysate.



Formalin-fixed and paraffin-embedded human cancer tissue reacted with the primary antibody, which was peroxidase-conjugated to the secondary antibody, followed by AEC staining. This data demonstrates the use of this antibody for immunohistochemistry; clinical relevance has not been evaluated. BC = breast carcinoma; HC = hepatocarcinoma.



Formalin-fixed and paraffin-embedded human lymph with CD33 (SIGLEC3) Antibody (N-term), which was peroxidase-conjugated to the secondary antibody, followed by DAB staining. This data demonstrates the use of this antibody for immunohistochemistry; clinical relevance has not been evaluated.

Gene ID:	Gene Symbol:
945	CD33

Other Names:

Myeloid cell surface antigen CD33; Sialic acid-binding Ig-like lectin 3; Siglec-3; gp67; CD33; SIGLEC3

Target/Specificity:

This CD33 (SIGLEC3) antibody is generated from rabbits immunized with a KLH conjugated synthetic peptide between 18~48 amino acids from the N-terminal region of human SIGLEC3.

Application Notes:

The suggested dilution is:

ELISA 1:1,000

Western blotting 1:100~500

Immunohistochemistry 1:50~100

Format:

Purified polyclonal antibody supplied in PBS with 0.09% (W/V) sodium azide. This antibody is purified through a protein G column, eluted with high and low pH buffers and neutralized immediately, followed by dialysis against PBS.

Storage:

Maintain refrigerated at 2-8°C for up to 6 months. For long term storage store at -20°C in small aliquots to prevent freeze-thaw cycles.

Precautions:

CD33 (SIGLEC3) Antibody (N-term) is for research use only and not for use in diagnostic or therapeutic procedures.
