

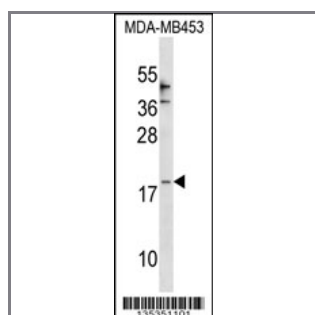
CCL25 Antibody (Center)

Peptide Affinity Purified Rabbit Polyclonal Antibody (Pab)

Catalog #	Applications:	Reactivity:	Accessions:
AP16140c	WB, E	H	O15444 , NP_005615.2
Concentration:	Size:	Isotype:	Clone Name:
0.25 mg/ml	0.1 mg	Rabbit Ig	RB35351

Application Data:

Calculated MW: 16609 Da



CCL25 Antibody (Center) (Cat. #AP16140c) western blot analysis in MDA-MB453 cell line lysates (35ug/lane). This demonstrates the CCL25 antibody detected the CCL25 protein (arrow).

Gene ID:	Gene Symbol:
6370	CCL25

Other Names:

C-C motif chemokine 25; CCL25; SCYA25; TECK

Target/Specificity:

This CCL25 antibody is generated from rabbits immunized with a KLH conjugated synthetic peptide between 65-95 amino acids from the Central region of human CCL25.

Application Notes:

The suggested dilution is:

ELISA 1:1,000

Western blotting 1:100~500

Format:

Purified polyclonal antibody supplied in PBS with 0.09% (W/V) sodium azide. This antibody is purified through a protein A column, followed by peptide affinity purification.

Storage:

CCL25 Antibody (Center) can be refrigerated at 2-8°C for up to 6 months. For long term storage,

place the at -20°C.

Precautions:

CCL25 Antibody (Center) is for research use only and not for use in diagnostic or therapeutic procedures.
