

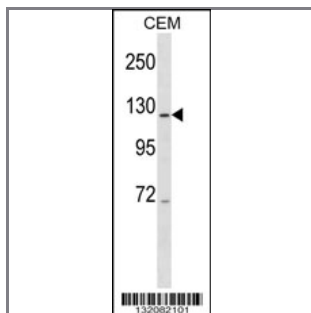
## PRPF6 Antibody (C-term)

Peptide Affinity Purified Rabbit Polyclonal Antibody (Pab)

<b>Catalog #</b>	<b>Applications:</b>	<b>Reactivity:</b>	<b>Accessions:</b>
AP16097b	WB, E	H	<a href="#">NP_036601.2</a> , <a href="#">O94906</a>
<b>Concentration:</b>	<b>Size:</b>	<b>Isotype:</b>	<b>Clone Name:</b>
0.25 mg/ml	0.1 mg	Rabbit Ig	RB32082

### Application Data:

Calculated MW: 106925 Da



PRPF6 Antibody (C-term) (Cat. #AP16097b) western blot analysis in CEM cell line lysates (35ug/lane). This demonstrates the PRPF6 antibody detected the PRPF6 protein (arrow).

<b>Gene ID:</b>	<b>Gene Symbol:</b>
<a href="#">24148</a>	PRPF6

### Other Names:

Pre-mRNA-processing factor 6;PRPF6;C20orf14

### Target/Specificity:

This PRPF6 antibody is generated from rabbits immunized with a KLH conjugated synthetic peptide between 806-827 amino acids from the C-terminal region of human PRPF6.

### Application Notes:

The suggested dilution is:

ELISA 1:1,000

Western blotting 1:100~500

### Format:

Purified polyclonal antibody supplied in PBS with 0.09% (W/V) sodium azide. This antibody is purified through a protein A column, followed by peptide affinity purification.

### Storage:

PRPF6 Antibody (C-term) can be refrigerated at 2-8°C for up to 6 months. For long term storage,

place the at -20&deg;C.

---

**Precautions:**

PRPF6 Antibody (C-term) is for research use only and not for use in diagnostic or therapeutic procedures.

---