

## EVI1 Antibody (N-term)

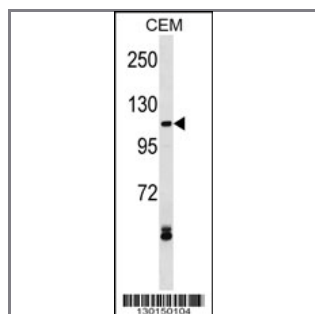
### Peptide Affinity Purified Rabbit Polyclonal Antibody (Pab)

Catalog #	Applications:	Reactivity:	Accessions:
AP16088a	WB, E	H	<a href="#">Q03112</a> , <a href="#">NP_001098547.3</a> , <a href="#">NP_001098548.2</a> , <a href="#">NP_001157471.1</a>

Concentration:	Size:	Isotype:	Clone Name:
0.25 mg/ml	0.1 mg	Rabbit Ig	RB30150

#### Application Data:

Calculated MW: 118276 Da



EVI1 Antibody (N-term) (Cat. #AP16088a) western blot analysis in CEM cell line lysates (35ug/lane). This demonstrates the EVI1 antibody detected the EVI1 protein (arrow).

Gene ID:	Gene Symbol:
<a href="#">2122</a>	MECOM

#### Other Names:

MDS1 and EVI1 complex locus protein EVI1;MECOM;EVI1

#### Target/Specificity:

This EVI1 antibody is generated from rabbits immunized with a KLH conjugated synthetic peptide between 1-30 amino acids from the N-terminal region of human EVI1.

#### Application Notes:

The suggested dilution is:

ELISA 1:1,000

Western blotting 1:100~500

#### Format:

Purified polyclonal antibody supplied in PBS with 0.09% (W/V) sodium azide. This antibody is purified through a protein A column, followed by peptide affinity purification.

**Storage:**

EVI1 Antibody (N-term) can be refrigerated at 2-8°C for up to 6 months. For long term storage, place the at -20°C.

---

**Precautions:**

EVI1 Antibody (N-term) is for research use only and not for use in diagnostic or therapeutic procedures.

---