

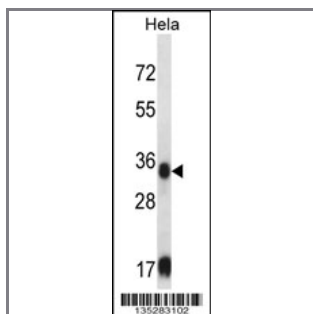
## SORD Antibody (Center)

### Peptide Affinity Purified Rabbit Polyclonal Antibody (Pab)

Catalog #	Applications:	Reactivity:	Accessions:
AP16049c	WB, E	H	<a href="#">NP_003095.2</a> , <a href="#">Q00796</a>
Concentration:	Size:	Isotype:	Clone Name:
0.25 mg/ml	0.1 mg	Rabbit Ig	RB35283

#### Application Data:

Calculated MW: 38325 Da



SORD Antibody (Center) (Cat. #AP16049c) western blot analysis in HeLa cell line lysates (35ug/lane). This demonstrates the SORD antibody detected the SORD protein (arrow).

Gene ID:	Gene Symbol:
<a href="#">6652</a>	SORD

#### Other Names:

Sorbitol dehydrogenase;SORD;

#### Target/Specificity:

This SORD antibody is generated from rabbits immunized with a KLH conjugated synthetic peptide between 210-239 amino acids from the Central region of human SORD.

#### Application Notes:

The suggested dilution is:

ELISA 1:1,000

Western blotting 1:100~500

#### Format:

Purified polyclonal antibody supplied in PBS with 0.09% (W/V) sodium azide. This antibody is purified through a protein A column, followed by peptide affinity purification.

#### Storage:

SORD Antibody (Center) can be refrigerated at 2-8°C for up to 6 months. For long term storage, place the at -20°C.

---

**Precautions:**

SORD Antibody (Center) is for research use only and not for use in diagnostic or therapeutic procedures.

---