

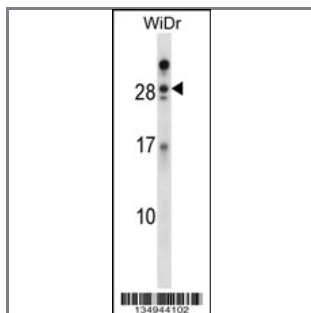
AZU1 Antibody (Center)

Peptide Affinity Purified Rabbit Polyclonal Antibody (Pab)

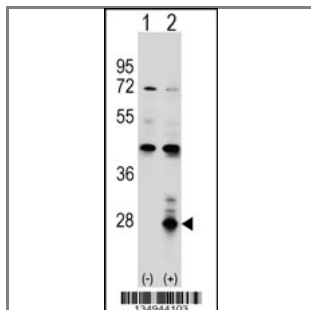
Catalog #	Applications:	Reactivity:	Accessions:
AP14972c	WB, E	H	P20160 , NP_001691.1
Concentration:	Size:	Isotype:	Clone Name:
0.25 mg/ml	0.1 mg	Rabbit Ig	RB34944

Application Data:

Calculated MW: 26886 Da



AZU1 Antibody (Center) (Cat. #AP14972c) western blot analysis in WiDr cell line lysates (35ug/lane). This demonstrates the AZU1 antibody detected the AZU1 protein (arrow).



Western blot analysis of AZU1 (arrow) using rabbit polyclonal AZU1 Antibody (Center) (Cat. #AP14972c). 293 cell lysates (2 ug/lane) either nontransfected (Lane 1) or transiently transfected (Lane 2) with the AZU1 gene.

Gene ID:	Gene Symbol:
566	AZU1

Other Names:

Azurocidin;AZU1;

Target/Specificity:

This AZU1 antibody is generated from rabbits immunized with a KLH conjugated synthetic peptide between 66-96 amino acids from the Central region of human AZU1.

Application Notes:

The suggested dilution is:
ELISA 1:1,000

Western blotting 1:100~500

Format:

Purified polyclonal antibody supplied in PBS with 0.09% (W/V) sodium azide. This antibody is purified through a protein A column, followed by peptide affinity purification.

Storage:

AZU1 Antibody (Center) can be refrigerated at 2-8°C for up to 6 months. For long term storage, place the at -20°C.

Precautions:

AZU1 Antibody (Center) is for research use only and not for use in diagnostic or therapeutic procedures.
