

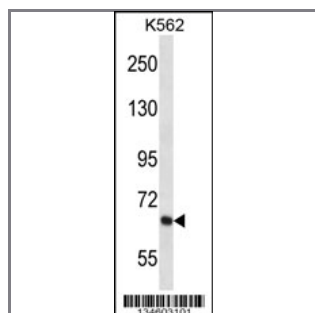
KCND2 Antibody (N-term)

Peptide Affinity Purified Rabbit Polyclonal Antibody (Pab)

Catalog #	Applications:	Reactivity:	Accessions:
AP14832a	WB, E	H	Q9NZV8 , NP_036413.1
Concentration:	Size:	Isotype:	Clone Name:
0.25 mg/ml	0.1 mg	Rabbit Ig	RB34603

Application Data:

Calculated MW: 70537 Da



KCND2 Antibody (N-term) (Cat. #AP14832a) western blot analysis in K562 cell line lysates (35ug/lane). This demonstrates the KCND2 antibody detected the KCND2 protein (arrow).

Gene ID:	Gene Symbol:
3751	KCND2

Other Names:

Potassium voltage-gated channel subfamily D member 2; KCND2; KIAA1044

Target/Specificity:

This KCND2 antibody is generated from rabbits immunized with a KLH conjugated synthetic peptide between 122-151 amino acids from the N-terminal region of human KCND2.

Application Notes:

The suggested dilution is:

ELISA 1:1,000

Western blotting 1:100~500

Format:

Purified polyclonal antibody supplied in PBS with 0.09% (W/V) sodium azide. This antibody is purified through a protein A column, followed by peptide affinity purification.

Storage:

KCND2 Antibody (N-term) can be refrigerated at 2-8°C for up to 6 months. For long term storage,

place the at -20°C.

Precautions:

KCND2 Antibody (N-term) is for research use only and not for use in diagnostic or therapeutic procedures.
