

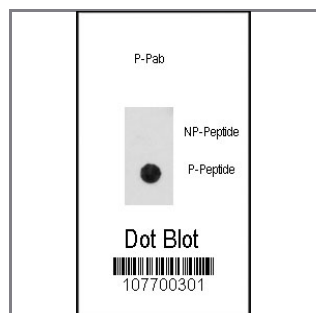
## Phospho-CDK2-pT14 Antibody

Peptide Affinity Purified Rabbit Polyclonal Antibody (Pab)

<b>Catalog #</b>	<b>Applications:</b>	<b>Reactivity:</b>	<b>Accessions:</b>
AP3613a	DB, E	H	<a href="#">P24941</a>
<b>Concentration:</b>	<b>Size:</b>	<b>Isotype:</b>	<b>Clone Name:</b>
0.25 mg/ml	0.1 mg	Rabbit Ig	RB7700

### Application Data:

**Calculated MW: 33930 Da**



Dot blot analysis of anti-Phospho-CDK2-pT14 Antibody (Cat.#AP3613a) on nitrocellulose membrane. 50ng of Phospho-peptide or Non Phospho-peptide per dot were adsorbed. Antibody working concentrations are 0.5ug per ml.

<b>Gene ID:</b>	<b>Gene Symbol:</b>
<a href="#">1017</a>	CDK2

### Other Names:

Cell division protein kinase 2; p33 protein kinase

### Target/Specificity:

This Phospho-CDK2-pT14 antibody is generated from rabbits immunized with a KLH conjugated synthetic phosphopeptide corresponding to amino acid residues surrounding T14 of human CDK2.

### Application Notes:

The suggested dilution is:  
 ELISA 1:1,000  
 Dot blotting 1:500

### Format:

Purified polyclonal antibody supplied in PBS with 0.09% (W/V) sodium azide. This antibody is purified through a protein A column, followed by two-step phosphospecific peptide affinity purification.

### Storage:

Maintain refrigerated at 2-8°C for up to 6 months. For long term storage store at -20°C in

small aliquots to prevent freeze-thaw cycles.

---

**Precautions:**

Phospho-CDK2-pT14 Antibody is for research use only and not for use in diagnostic or therapeutic procedures.

---