

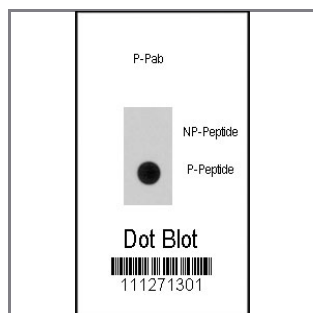
Phospho-EGFR-pS768 Antibody

Peptide Affinity Purified Rabbit Polyclonal Antibody (Pab)

Catalog #	Applications:	Reactivity:	Accessions:
AP3510a	DB, E	H	P00533

Concentration:	Size:	Isotype:	Clone Name:
0.25 mg/ml	0.1 mg	Rabbit Ig	RB11271

Application Data: **Calculated MW: 134277 Da**



Dot blot analysis of anti-EGFR Phospho-specific Pab (Cat.#AP3510a) on nitrocellulose membrane. 50ng of Phospho-peptide or Non Phospho-peptide per dot were adsorbed. Antibody working concentrations are 0.5ug per ml.

Gene ID:	Gene Symbol:
1956	EGFR

Other Names:

Epidermal growth factor receptor [Precursor]; Receptor tyrosine-protein kinase ErbB-1; EGFR; ERBB1

Target/Specificity:

This Phospho-EGFR-pS768 antibody is generated from rabbits immunized with a KLH conjugated synthetic phosphopeptide corresponding to amino acid residues surrounding S768 of human EGFR.

Application Notes:

The suggested dilution is:

ELISA 1:1,000

Dot blot 1:500

Format:

Purified polyclonal antibody supplied in PBS with 0.09% (W/V) sodium azide. This antibody is purified through a protein A column, followed by two-step phosphospecific peptide affinity purification.

Storage:

Maintain refrigerated at 2-8°C for up to 6 months. For long term storage store at -20°C in

small aliquots to prevent freeze-thaw cycles.

Precautions:

Phospho-EGFR-pS768 Antibody is for research use only and not for use in diagnostic or therapeutic procedures.
