

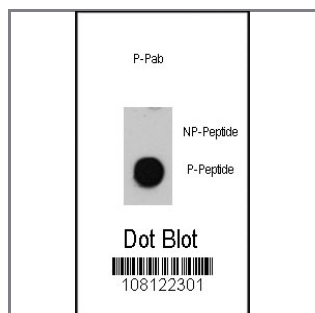
Phospho-ATM-pS1981 Antibody

Peptide Affinity Purified Rabbit Polyclonal Antibody (Pab)

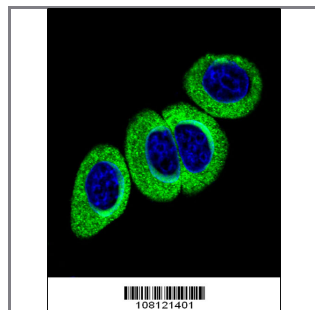
Catalog #	Applications:	Reactivity:	Accessions:
AP3504a	DB, IF, E	H	Q13315
Concentration:	Size:	Isotype:	Clone Name:
0.25 mg/ml	0.1 mg	Rabbit Ig	RB8121

Application Data:

Calculated MW: 350644 Da



Dot blot analysis of anti-Phospho-ATM-pS1981 Antibody (Cat.#AP3504a) on nitrocellulose membrane. 50ng of Phospho-peptide or Non Phospho-peptide per dot were adsorbed. Antibody working concentrations are 0.5ug per ml.



Confocal immunofluorescent analysis of Phospho-ATM-pS1981 Antibody (Cat.#AP3504a) with Hela cell followed by Alexa Fluor 488-conjugated goat anti-rabbit IgG (green). DAPI was used to stain the cell nuclear (blue).

Gene ID:	Gene Symbol:
472	ATM

Other Names:

Serine-protein kinase ATM; Ataxia telangiectasia mutated; A-T, mutated; ATM

Target/Specificity:

This Phospho-ATM-pS1981 antibody is generated from rabbits immunized with a KLH conjugated synthetic phosphopeptide corresponding to amino acid residues surrounding S1981 of human ATM.

Application Notes:

The suggested dilution is:
ELISA 1:1,000

Dot blot 1:500

Immunofluorescence 1:10~50

Format:

Purified polyclonal antibody supplied in PBS with 0.09% (W/V) sodium azide. This antibody is purified through a protein A column, followed by two-step phosphospecific peptide affinity purification.

Storage:

Maintain refrigerated at 2-8°C for up to 6 months. For long term storage store at -20°C in small aliquots to prevent freeze-thaw cycles.

Precautions:

Phospho-ATM-pS1981 Antibody is for research use only and not for use in diagnostic or therapeutic procedures.
