

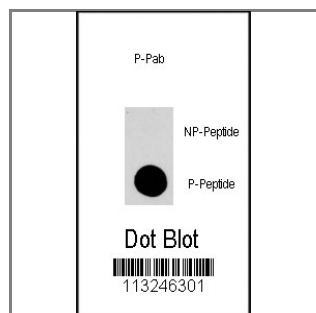
Phospho-MAPK14-pY322 Antibody

Peptide Affinity Purified Rabbit Polyclonal Antibody (Pab)

Catalog #	Applications:	Reactivity:	Accessions:
AP3438a	DB, E	H	Q16539
Concentration:	Size:	Isotype:	Clone Name:
0.25 mg/ml	0.1 mg	Rabbit Ig	RB13246

Application Data:

Calculated MW: 41293 Da



Dot blot analysis of anti-MAPK14-pY322 Phospho-specific Pab (Cat.#AP3438a) on nitrocellulose membrane. 50ng of Phospho-peptide or Non Phospho-peptide per dot were adsorbed. Antibody working concentrations are 0.5ug per ml.

Gene ID:

[1432](#)

Gene Symbol:

MAPK14

Other Names:

Mitogen-activated protein kinase 14, Mitogen-activated protein kinase p38alpha, MAP kinase p38alpha, Cytokine suppressive anti-inflammatory drug binding protein, CSAID binding protein, CSBP, MAX-interacting protein 2, MAP kinase MXI2, SAPK2A

Target/Specificity:

This Phospho-MAPK14-pY322 antibody is generated from rabbits immunized with a KLH conjugated synthetic phosphopeptide corresponding to amino acid residues surrounding Y322 of human MAPK14.

Application Notes:

The suggested dilution is:

ELISA 1:1,000

Dot Blot 1:500

Format:

Purified polyclonal antibody supplied in PBS with 0.09% (W/V) sodium azide. This antibody is first purified by protein A affinity chromatography. Then, the antibody fraction is peptide affinity purified in a 2-step procedure with peptides. The antibody is eluted with high and low pH buffers and neutralized

immediately, followed by dialysis against PBS.

Storage:

Maintain refrigerated at 2-8°C for up to 6 months. For long term storage store at -20°C in small aliquots to prevent freeze-thaw cycles.

Precautions:

Phospho-MAPK14-pY322 Antibody is for research use only and not for use in diagnostic or therapeutic procedures.
